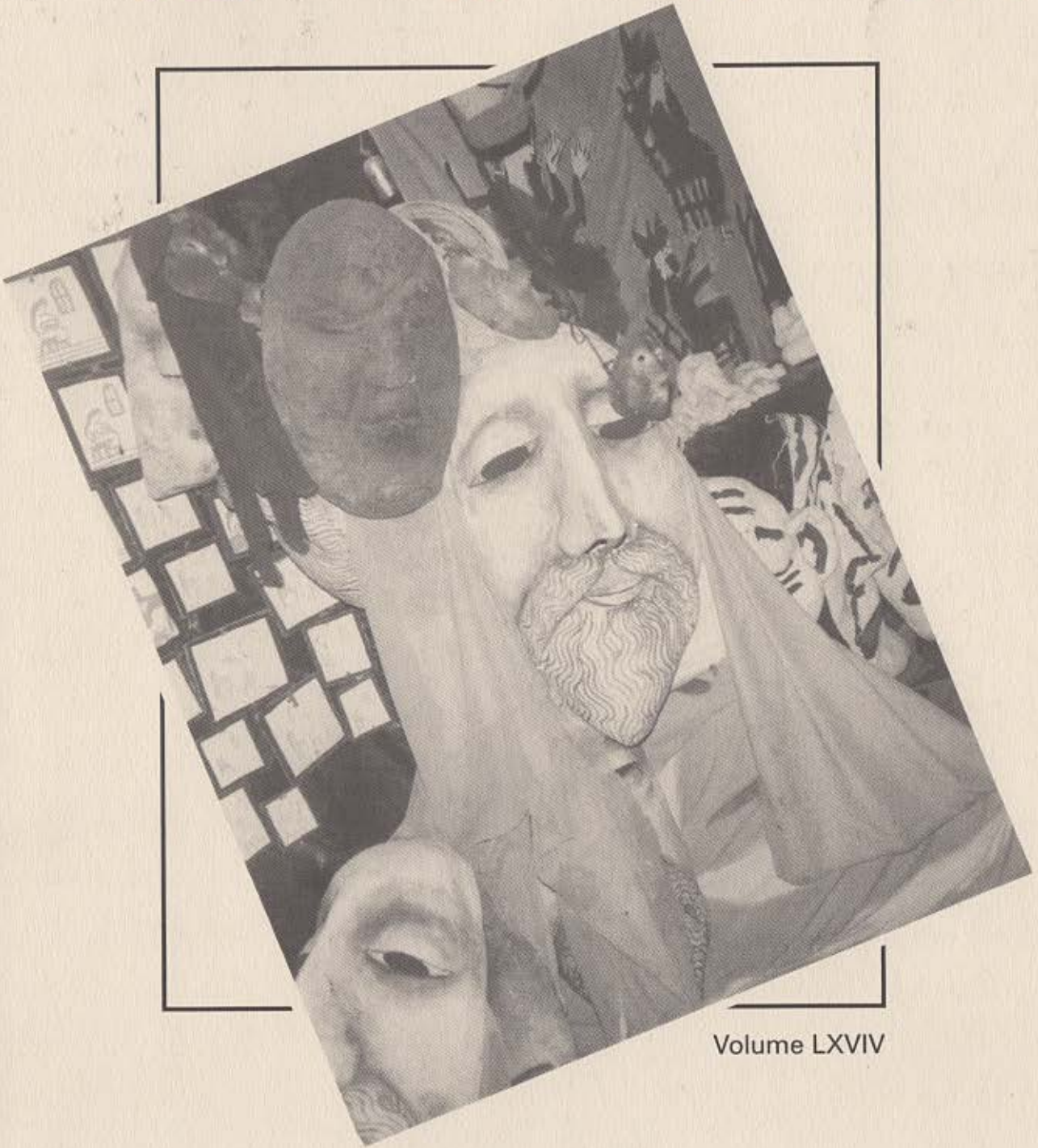


PLAYBILL



Volume LXVIV

Alpha Psi Omega

1995

Delta Psi Omega



ALPHA PSI OMEGA

National Honorary Dramatic Fraternity

Founded in 1925

Summer 1995

Dear Casts of Alpha Psi Omega and Delta Psi Omega,

I hope the 1995 *Playbill* finds you well and busy doing exciting theater! The officers of Alpha and Delta Psi Omega are delighted to express our pride in the outstanding theater work being done by the many casts of APO and DPO. For the sixty-ninth year, *Playbill* pays tribute to the diverse and important performance achievements of APO and DPO casts throughout the United States. While putting together this year's *Playbill*, I was impressed by the quality evident in the photographs submitted. There is no doubt that college and university theater is alive and well in America.

In my role as National Business Manager of APO and DPO, I continue to relish the opportunities I have to speak or correspond with so many of you during the year. I hope you will continue to call on me if I can be of assistance in planning and carrying out the functions of your cast. There are two important matters of business I would like to call to your attention:

1) Some of you may have already discovered that the phone number of the National Office has changed. It is now (317) 361-6394. This change is the result of a state-of-the-art telecommunications system installed recently at Wabash College, home of the APO/DPO National Office. There is now voice mail which should make it easier for you to leave a message for me. I hope the change has not caused anyone significant inconvenience.

2) After a quarter of a century without an increase in national dues, it is now necessary to have an increase. For APO, the national dues will be raised to \$20 and for DPO to \$10. The new rates are effective January 15, 1996. If you have any questions or concerns about these changes, please do not hesitate to contact me.

I appreciate the cooperation of so many of you who make my job easier. My particular thanks to those casts that sent report forms and photographs for the 1995 *Playbill*.

Wishing you all the best in the year to come,

James Fisher
Editor, *Playbill*; National Business Manager APO/DPO
Professor of Theater, Wabash College

Jerry Henderson
President
Pepperdine University
Malibu, CA 90265

Susan S. Cole
Vice President
Appalachian State University
Boone, NC 28608

James Fisher
National Business Manager
Wabash College
Crawfordsville, IN 47933

ALPHA PSI OMEGA and DELTA PSI OMEGA *Playbill*

Table of Contents

History of Alpha Psi Omega and Delta Psi Omega	Inside back cover
Letter from the National Business Manager	Inside front cover
Table of Contents	1, 2
A Tribute to The Bread and Puppet Theater	31, 32

The APO/DPO Casts:

Albertson College	11
Alderson-Broadus College	4
Anderson University	22
Appalachian State University	17
Asbury College	28
Averett College	18
Bentley College	29
Berry College	19
Bethany College	21
Blinn College	27
Carson-Newman College	5
Centenary College of Louisiana	24
Coffeyville Community College	30
Concordia College	16
Dakota Wesleyan University	4
Davidson College	28
Davis and Elkins College	25
The Defiance College	28
Drury College	29
Genesee Community College	29
Hardin-Simmons University	26
Hartwick College	30
Holmes Community College	3
Hastings College	8
Independence Community College	27
Jackson State University	30
Jacksonville University	30
Loras College	18
Lycoming College	29
Lyon College	28
Marietta College	15
Marquette University	8
Marshall University	20
Maryville College	9
McNeese State University	13
Methodist College	9

Mineral Area College	27
Mississippi Gulf Coast Community College	21
Missouri Southern State College	10
Missouri State University	28
Morningside College	11
Oakland City University	27
St. John's University	27
State University of New York at Oswego	14
Sul Ross University	3
Susquehanna University	29
Taylor University	16
Union College	12
The University of Richmond	12
Urbana Univesity	5
Wabash College	7
Wesleyan College	10
Western Wyoming College	23
Whittier College	6

Front Cover illustration:

Puppets and masks on display at the Bread and Puppet Theater Museum in Glover, VT.

ALPHA PSI OMEGA and **DELTA PSI OMEGA** Officers: Jerry Henderson (President), c/o Department of Theatre and Speech, Pepperdine University, Malibu, CA 90265; Susan S. Cole (Vice President), c/o Department of Theatre and Speech, Appalachian State University, Boone, NC 28608; James Fisher (National Business Manager and Editor of *Playbill*), c/o Theater Department, Wabash College, Crawfordsville, IN 47933.

Grateful acknowledgment to Marge Jackson, Roy E. Sexton, and Anna Fisher for assistance in preparing and mailing *Playbill*.

Playbill is published annually by Alpha Psi Omega and Delta Psi Omega to afford college and university theatre organizations the opportunity to acquaint themselves with what is being done by their contemporaries and to serve as the official organ of this honorary fraternity. Direct all business communications to: James Fisher, National Business Manager of APO/DPO, c/o Theater Department, Wabash College, Crawfordsville, IN 47933.
Phone: (317) 361-6394. E-mail: FisherJ@Wabash.edu.

The Jerome Lawrence and Robert E. Lee Theatre Research Institute at Ohio State University houses the archives of Alpha Psi Omega and Delta Psi Omega. Alpha Psi Omega and Delta Psi Omega gratefully acknowledges the assistance of the Institute. Archival materials include back issues of *Playbill* and other APO/DPO publications, photographs and ephemera. Information can be obtained by writing to: The Jerome Lawrence and Robert E. Lee Theatre Research Institute, The Ohio State University, 1800 Cannon Drive, Columbus, OH 43210-1230.
Phone: (614) 292-6614.

SUL ROSS STATE UNIVERSITY

Alpine, TX
APO Cast: Gamma Iota

Gregory M. Schwab, faculty sponsor. Other faculty: Keith West, George Bradley. Officers: Clint E. Adams, President; Mark Joachim, Vice-President; Phyllis E. Garcia, Secretary; Karie Kildow, Historian.

Productions: *The Mousetrap*, *Little Mary Sunshine*, *Apple Blossom Afternoon*, *The Great Barbecue War*, *Andi and the Lion*, *University*, *The Illusion*, *Junebug: Junebug This Week*, *A Christmas Carol*, *Under the Yum Yum Tree*, *The Necklace*, *The Dining Room*.



Left: John Wilson and Therese Kelly in *The Illusion*, directed by Gregory M. Schwab.



Amit Rangra and Jennifer Helms in *Jake's Women*, directed by Gregory M. Schwab, with scene design by Brian Jones.

HOLMES COMMUNITY COLLEGE

Goodman, MS
DPO Cast: #245

Rita A. Jones, faculty sponsor. Officers: Stephanie McCombs, President; Glen Trute, Vice-President; Eddie Koeder, Secretary.

Productions: *Double Take at Beatrice's Boardin' House (or Things Ain't What They Seem)*, *Run to the Roundhouse*, *Nellie (He Can't Corner You There)*, *The Adventures of the Clutching Claw (or What's the Mater Alma?)*, *The Mousetrap*.

Students receiving awards at the annual ceremony were Eddie Esters, Jake Drennan, Johnny Papisan, Stephanie McCombs, Christy Devine, Kim Spence, Monica Henley, Jeff McDonald, Melissa Norwood, Ashley Vlach, Seth Starns, Tracy Fleming, James Pollard, Troy Tumberlinson.



Johnny Papisan in *Double Take at Beatrice's Boardin' House (or Things Ain't What They Seem)*, directed and designed by Rita A. Jones, with costumes by Juanita Jones.

Right: Troy Tumberlinson and Monica Henley in *The Mousetrap*, directed and designed by Rita A. Jones.



**ALDERSON-BROADDUS
COLLEGE**

Philippi, WV
APO Cast: Delta Gamma

Alma J. Bennett, faculty sponsor. Faculty: Officers: Tedd Cogar, Cast Director; Tiffany Curtis, Historian; Robert Dawson, Editor; Michael Ludle, Business Manager; John Gawthrop, Stage Manager.

Productions: *Frogsongs*, *Animal Farm*, *The Stone Congregation*, *Light Up the Sky*.



Brock Perkins, John Gawthrop, Randy Panke, Faith Bevan, Ieneke Parks, and Tedd Cogar in *Light Up the Sky*, directed by Alma J. Bennett, with scene design by Joel Baird and Richard Marie, with costumes by Alma J. Bennett.



Katherine Franzke and Shane Mitchell in *Frogsongs*, directed and designed by Alma J. Bennett.

This year's theater award winners were Tedd Cogar, Ellada Wilhelm, Michael Ludle, Shane Mitchell, Katherine Frantzke, Sara Burgess, Faith Bevan, John Fowles, Matt Kight, Rhonda Allen.

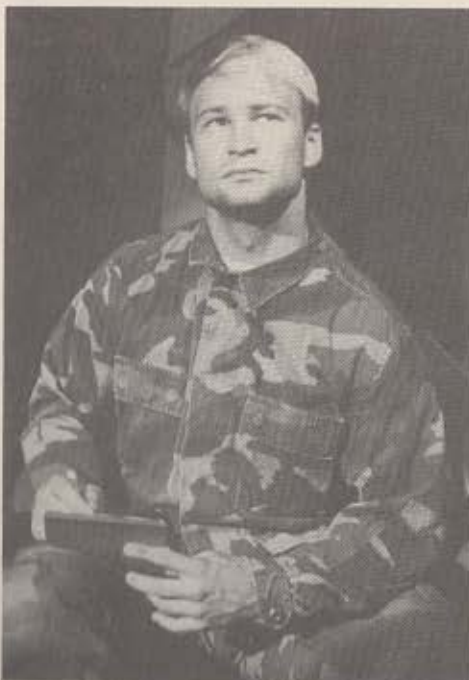
**DAKOTA WESLEYAN
UNIVERSITY**

Mitchell, SD
APO Cast: Omega Alpha

Darryl F. Patten, faculty sponsor. Officers: Darshan Wilson, President; Howard Gunston, Secretary-Treasurer.

Productions: *A Few Good Men*, *And the Tide Shall Cover the Earth*, *The Savage Dilemma*.

Theater awards for 1994-95 were presented to Howard Gunston, Darshan Wilson, Jason Scott, Paula Boyd, Todd Herseth, Darcie Tollefson.



Shannon Doering in *A Few Good Men*, directed by Darryl F. Patten.



Mike Colwill and Jill Morris in *The Savage Dilemma*, directed by Darryl F. Patten.

URBANA UNIVERSITY

Urbana, OH
APO Cast: Urbana Ohio

Robert Michael Morris, faculty sponsor. Officers: Kenya Ward, President; Anne Connell, Vice President; Ryanne Converse, Secretary; Brian Sampson, Treasurer.

Productions: *The Miracle of Christmas*, *The Caribbean Miser*.

Award winners for 1994-95 include: Kenya Ward, LeRoy Thornton, Ryanna Converse, Jonothan Pultz, Christy Jeter, and Randy Bengel.



Jamie Ward and Mark Houseman in *The Miracle of Christmas*, directed and designed by Robert Michael Morris.



Right: Pamela Dooley and Holly Weatherhead in *There Is No Tragedy in Thebes*, directed by Robert Michael Morris, with scene design by Phillip Louis Rodzen and costumes by Robert Michael Morris.

CARSON-NEWMAN COLLEGE

Jefferson City, TN
APO Cast: Eta Beta

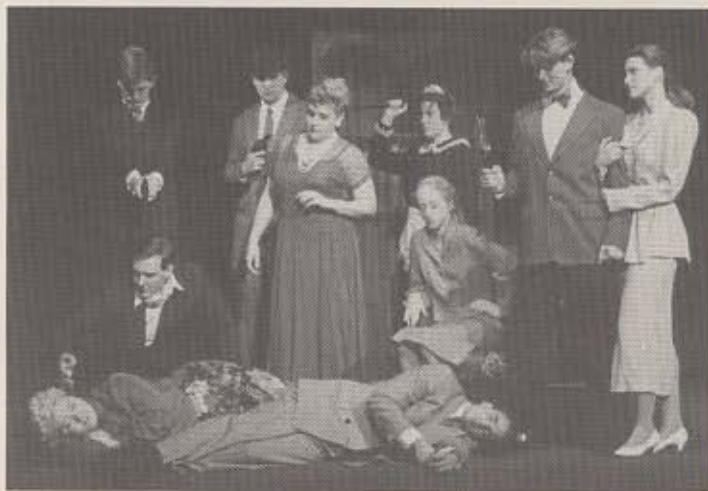
John Lee Welton, faculty sponsor. Officers: Laura E. Craver, President; Lance L. Noe, Vice President; Mitzi A. Price, Secretary/Treasurer; T. Scott Waisner, Historian/Parliamentarian.

Productions: *The Musical Comedy Murders of 1940*, *Tales From Electric Mountain*, *The Glass Menagerie*, *The Perfect Man*, *Young Goodman Brown*, *An Otherwise Dull Day in the Breakroom*, *Greater Tuna*.

Acting awards were presented to Christopher G. Morelock, Jackson Bailey, Heather Mishler, Angela Caraway, Tony McDonald, Michele Strange, Mitzi Price.



Travis Stansell and Heather Mishler in *The Glass Menagerie*, directed and designed by John Lee Welton, with costumes by Laura Craver.



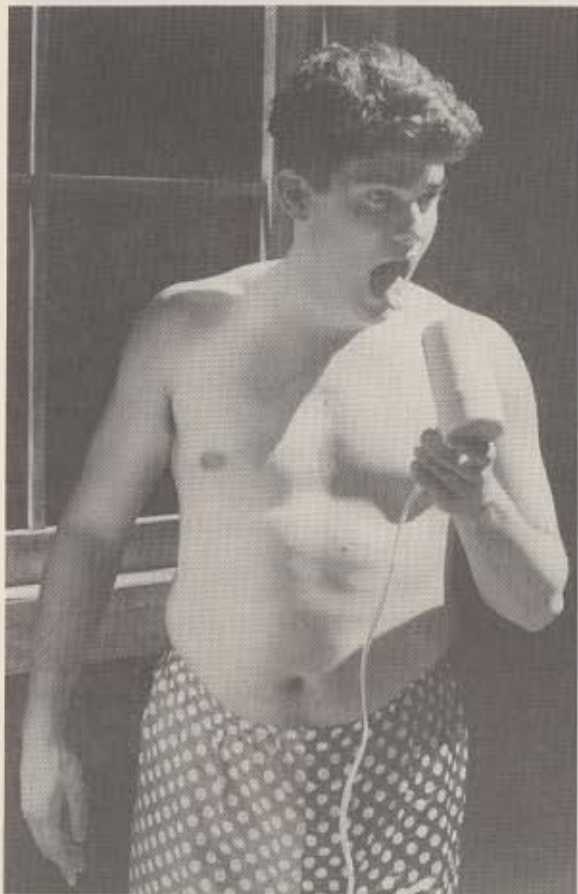
Cast members of *The Musical Comedy Murders of 1940*, directed and designed by John Lee Welton, with costumes by Laura Craver.

WHITTIER COLLEGE

Whittier, CA
APO Cast: Pi Mu

Jack De Vries, faculty sponsor. Other faculty: Crystal Brian, Brian Reed. Officers: Guy Marziello, Cast Director; Mike Nelson; Cast Stage Manager; Katy Givler, Cast Business Manager.

Productions: *Italian American Reconciliation*, *Dancing at Lughnasa*, *Blue Window*, *Lydie Breeze*.

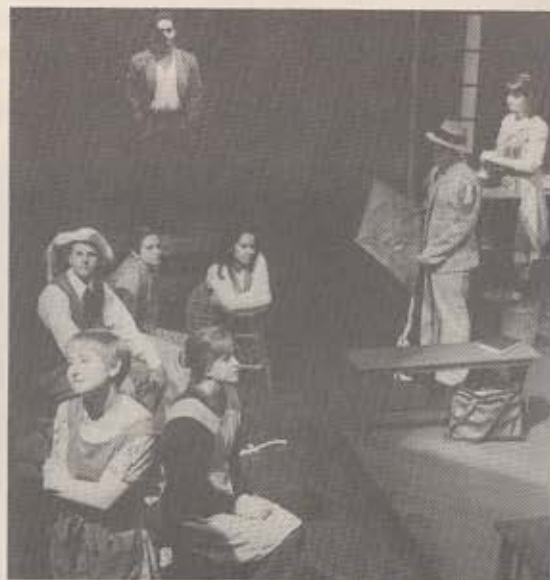


Dimas Diaz and Diana Polo in *Italian American Reconciliation*, directed by Jack De Vries, with scene design by Brian Alan Reed and costumes by Audrey Eisner.

Guy Marziello was presented with the "Outstanding Senior in Theater Arts" award.



Diana Polo and Wendy Newell in *Lydie Breeze*, directed by Crystal Brian, with scene design by Brian Alan Reed and costumes by Alexa M. Ebben.



Dewi Norwood, Wendy Newell, Scott Sauter, Karri Bowman, Angel Felix, David Carnevale, John Shaterian, and P. J. Gardner in *Dancing at Lughnasa*, directed by Crystal Brian, with scene design by Brian Alan Reed and costumes by Audrey Eisner.

WABASH COLLEGE

Crawfordsville, IN
APO Cast: Scarlet Masque

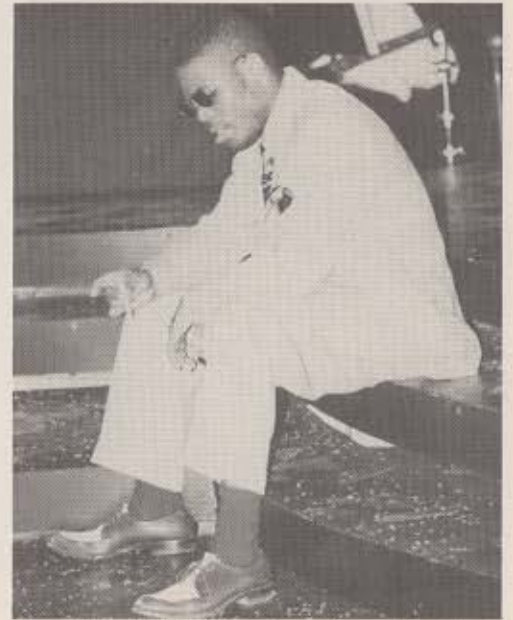


Dana W. Fisher, James Marietta, Rachel Miller, Roy E. Sexton, and Ramona Zachary in *Tartuffe*, directed by James Fisher, with scene and lighting design by Lonna Wilke and costumes by Laura Conners.

Awards were presented to Gregory Manning (Theater Performance Prize), Marcus Doshi (Theater Technical Prize), and Roy E. Sexton won a newly endowed prize, the Erminie C. Leonardis Theater History Award, which will be presented annually to a student for outstanding work in theater history, literature, or criticism. Gregory Manning also won the Phi Beta Kappa Prize for his outstanding performances throughout the year. Guest actresses were featured in *Tartuffe* (Dana W. Fisher), *Miss Evers' Boys* (Connie Oates), and *As You Like It* (Teri Clark). Deirdre Abbott, who was musical director for *As You Like It*, was presented with an honorary membership in Alpha Psi Omega.



Left: Roy E. Sexton and Gregory Manning in *Tartuffe*, directed by James Fisher, with scene and lighting design by Lonna Wilke and costumes by Laura Conners.



Gregory Manning in *As You Like It*, directed by Michael Abbott, with scene and lighting design by Lonna Wilke, costume design by Laura Conners, and musical direction by Deirdre Abbott.



Gregory Manning, Connie Oates, John Cole, Kenneth Patterson, and Luttrell Levingston in *Miss Evers' Boys*, directed by Dwight Watson, with scene and lighting design by Lonna Wilke and costumes by Laura Conners.

HASTINGS COLLEGE

Hastings, NE
APO Cast: Theta Psi

Roland Myers and George White, faculty sponsors.
Officers: Eric Eichenberger, President; Marc Erickson, Vice President; Wendy Karohl, Secretary; Tara Huber, Treasurer; Laurie Crowe, Historian; Michaela McCoy, Pledge Master.

Productions: *Stalag 17*, *The Wizard of Oz*, *Picnic*, *The Balcony*.



John Carlson and Laurie Crowe in *Picnic*, directed by Roland Myers, with scene design by George White and costumes by Roland Myers.



Luke Hopper, Rick Bristol, and Eric Eichenberger in *Stalag 17*, directed by Roland Myers, with scene design by George White and costumes by Roland Myers.

Awards for 1994-95 were presented to Rick Bristol, Amanda Link, Michelle Power, Amy Kunkee, Luke Hopper, Jennifer Gray, John Carlson, Jason Levering, Mike Tushaus, Heather Seedorf, Laurie Crowe, and Michaela McCoy.

MARQUETTE UNIVERSITY

Milwaukee, WI
APO Cast: Tau Omega



Jason Long, Patrick Hayes, Amy Beth Deuchler, Tim Mason, Kate James, and Gerard Neugent II in *On the Twentieth Century*, directed by Robert Liebhauser, with scene design by John Paul Devlin, lighting design by Adam Stockhausen, and costumes by Broadway Costumes, Inc.

Kenneth Kloth, faculty sponsor. Other faculty: Debra Krajec, Thomas Bruno, Gerald Walling, William Grange.

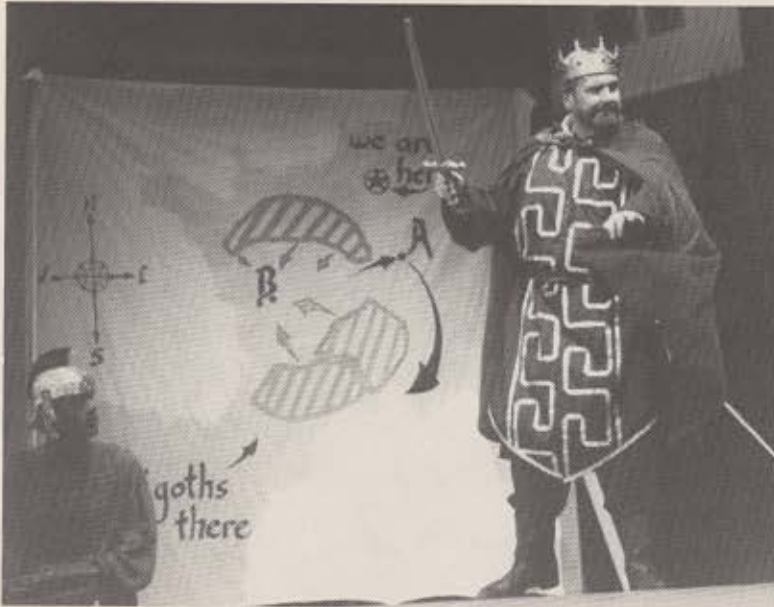
Productions: *On the Twentieth Century*, *Twelfth Night*, *The Good Doctor*, *Marvin's Room*, *The Emperor's New Clothes*.

Right: Marc Beaudoin and Tim Mason in *Twelfth Night*, directed by Tom Bruno, with scene design by Adam Stockhausen, lighting design by Kenneth Kloth, and costumes by Erin Slattery.



MARYVILLE COLLEGE

Maryville, TN
APO Cast: Alpha Alpha Omega



Aaron Stone and Robert Huchinson in *Pippin*, directed and designed by Jill Stapleton Bergeron with costumes by Melody Alexander.

Jill Stapleton Bergeron, faculty sponsor. Other faculty: Alan Reihl. Officers: Brian Prather, President; Darrien Thomson, Vice-President; Julie Williams, Secretary/Treasurer.

Productions: *Love Letters*, *Pippin*, *A Princess and an Itty Bitty Pill*, *Look Homeward, Angel*, *Bury the Dead*.

Theater awards for 1994-95 went to Aaron Stone, Mike Wilson, Barbara Kistler, Timothy Baines, Letitia Hall, John McDonald, Kathryn McDonald, Tiffany Rudicic, and Karson Leitch.

METHODIST COLLEGE

Fayetteville, NC
APO Cast: Omicron Mu



Left: Brian Prather and Barbara Kistler in *Look Homeward, Angel*, directed by Jill Stapleton Bergeron, with scene design by Alan Reihl and costumes by Melody Alexander.

Jack Peyrouse, faculty sponsor. Other faculty: Phoebe Hall, Paul Wilson. Officers: Camisha Bell, President; David Teague, Vice-President; Bethany Surridge, Secretary-Business Manager; Michael Graham, Historian.

Productions: *The Knight of the Burning Pestle*, *A Remarkably Gifted Woman*, *The Jack Tales*, *Barefoot in the Park*, *The Miser*, *I Love the Smell of Death*, *Are You Positive?*, *Dearest Katherine*.

New members of APO named were Candice Martin, Pamela Thibodeau, and Samuel Williams. Theater Performance Scholarships went to Jason Carter, Robert Devlin, Lindsay Summer Gilmore, Amanda Post, Bethany Surridge, and Samuel Williams. Other theater awards were won by Rob Devlin, John Glosson, Candice Martin, Jason Carter, Pamela Thibodeau, Sam Williams, and Camisha Bell.

Right: Cast of *The Knight of the Burning Pestle*, directed by Jack Peyrouse with scene design by Paul F. Wilson.



Michael Thrash, Sam Williams, Pam Thibodeau, Amanda Post, Candice Martin, Jason Carter, and Elise Newkirk in *The Jack Tales*, directed by Phoebe Hall with scene design by Paul F. Wilson.



MISSOURI SOUTHERN STATE COLLEGE

Joplin, MO
APO Cast: Upsilon Omicron

Sam Claussen, faculty sponsor.

Productions: *True West*, *Vanities*.



Nathan Ball and David Waggoner in *True West*, directed by Jonathon Peck with scene design by Shawn Irish.



Carry Stewart, Cheryl Michel, Tegan Whited in *Vanities*, directed by Gerrie-Ellen Johnston with scene design by Anne Jaros.

WESLEYAN COLLEGE

Macon, GA
APO Cast: Phi Psi

Michael McKinney, faculty sponsor. Other faculty: Julia Matthews. Officers: Elisabeth Leaman, President; Laura Meyer, Vice-President; Suzy Tyson, Secretary/Treasurer; Beth Hodges, Historian.

Productions: *Getting Out*, *A. . . My Name is Alice*, *In the Beginning*, *Third & Oak: The Laundrymat*, *Sister Mary Ignatius Explains It All For You. . .*, *Graceland*, *Election Year*.

Alpha Psi Omega Performer of the Year was Elisabeth Leaman and Alpha Psi Omega Technician of the Year was Chasity McWilliams.



Fletcher Anderson and Maranda Tennent in *Getting Out*, directed by Julia Matthews with scene design by Michael McKinney.



Right: Maranda Tennent, Alanda Hermann, Elisabeth Leaman, Laura Meyer, Mitsu Clark, and Rachael Lee in *In the Beginning*, directed by Julia Matthews, with scene design by Michael McKinney and costume design by Joy Mastrangelo-Kayzor.



MORNINGSIDE COLLEGE

Sioux City, IA
APO Cast: Alpha Gamma



Tabatha Richey, Amy Jenkins, Kate Yeska, David Neitzke, Krista Calvano, Laura Sisson, and Terika McDonald in *A Midsummer Night's Dream*, directed by Bette A. Skewis, with scene and lighting design by Bruce E. Bunger and costume design by Bette A. Skewis.

Marty S. Knepper, faculty sponsor. Other faculty: Bruce E. Bunger, Bette A. Skewis. Officers: Marty Thomsen, President; Krista Calvano, Vice President; Tabatha Richey, Secretary; Dean Stevens, Treasurer.

Productions: *The Boys From Syracuse*, *Elegies for Angels*, *Punks and Raging Queens*, *A Midsummer Night's Dream*, *The Line That Picked Up 1000 Babes*, *A Girl's Guide to Chaos*.

ALBERTSON COLLEGE

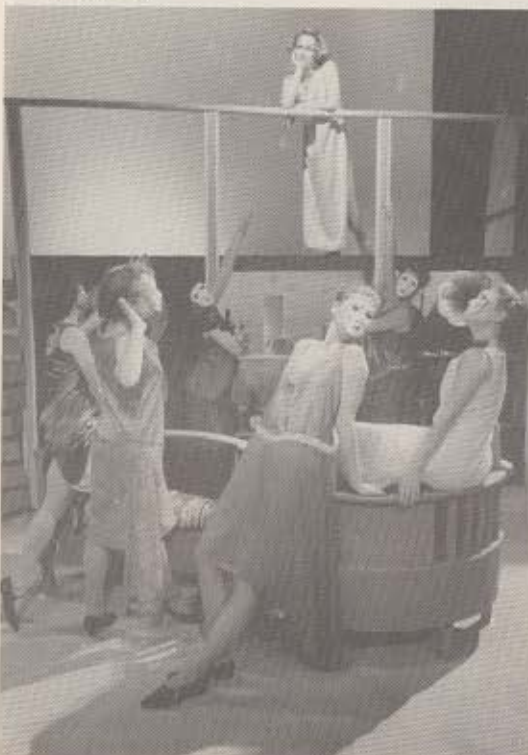
Caldwell, ID
APO Cast: Eta

Right: Jennifer Hoefert and Bette Skewis in *Elegies for Angels*, *Punks and Raging Queens*, directed by Bill Russell, scene and lighting design by Bruce E. Bunger and costume design Bette A. Skewis.



Charles R. Hannum, faculty sponsor.

Productions: *Saint Joan*, *T-Bone 'N Weasel*, *Three Sisters*, *Private Lives*.



Left: Jill Snyder as Amanda, and Leonda Clendenen, Dena James, Lori Nelson, Anna Bogomolets, Jennifer Walker and Kristel Myatt as revelers in *Private Lives*, directed and designed by Charles R. Hannum, with costumes by Joan Lonergan, lighting by Louie Lopez, and choreography by Jennifer Walker.



Lucien Rey, Eric Rhode, Matt Pember, Leonda Clendenen, and Bret Weber in *Saint Joan*, directed and designed by Charles R. Hannum, with costumes by Joan Lonergan and lighting by Louie Lopez.

THE UNIVERSITY OF RICHMOND

Richmond, VA
APO Cast: Eta

John D. Welsh, faculty sponsor. Other faculty: Myra Daleng, Walter Schoen, Nancy Allen, Ruth Salisbury, Reed West, Rich Mason. Officers: Jeff Carl, President; Bob Murphy, Vice President; Amanda Clark, Secretary; Cassandra Briggs, Treasurer.

Productions: *Rosencrantz and Guildenstern Are Dead*, *A Funny Thing Happened on the Way to the Forum*, *Under Milkwood*.

Julie McCabe Amos won the Alton-Williams Scholarship, Julie McCabe Amos and David Rosenbaum were awarded the Welsh Scholarship, and Justin Poroszeck was presented with the William H. Lockey Technical Scholarship.



Steve Scott, Julie McCabe Amos, Jeff Carl, Jennifer Nittoso, Katie Massa, and Christian Dawson in *Under Milkwood*, directed by John D. Welsh, with scene design by W. Reed West and costume design by Nancy Allen.



Left: Sean Linfors, Dan Stackhouse, Jeff Carl, and Brent Podosek in *A Funny Thing Happened on the Way to the Forum*, directed by Walter Schoen, with scene design by W. Reed West and costume design by Nancy Allen.



Christian Crum and Katheryn Rumpf in *Cliffhanger*, directed and designed by James Emswiler with costumes by Jessica Luebbe.

UNION COLLEGE

Barbourville, KY
APO Cast: Zeta Chi

Rebecca A. Pettys, faculty sponsor. Officers: James Emswiler, President; Christopher McKim, Vice President; Jessica Luebbe, Secretary; Blair Skidmore, Treasurer.

Productions: *Cliffhanger*, *Joan of Lorraine*, *Come Blow Your Horn*.

Awards were presented to: Chad Elvington (Best Actor), Lorianne Kujawa (Best Actress), James Emswiler (Best Technician, Best Director).

Right: Lorianne Kujawa, David Seitz, and Christopher McKim in *Joan of Lorraine*, directed and designed by Lorianne Kujawa with costumes by Kapi Reith.



MCNEESE STATE UNIVERSITY

Lake Charles, LA
APO Cast: Pi Gamma

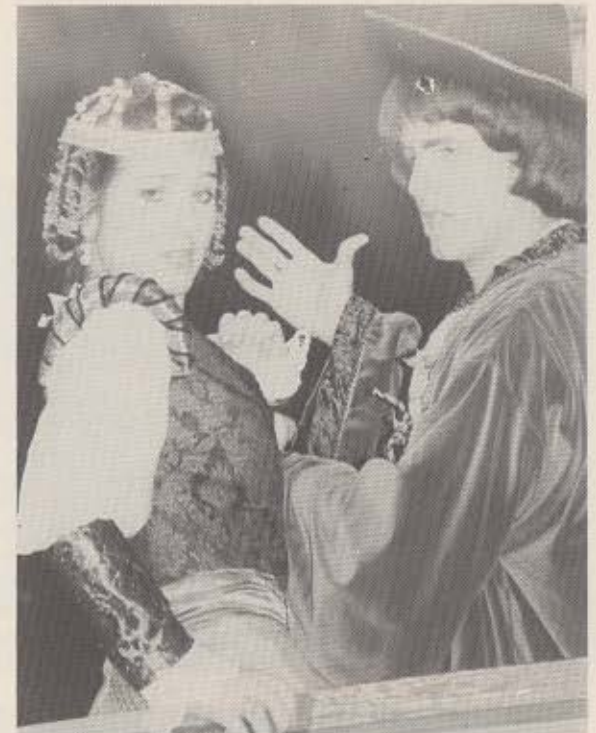


Carol Ann Gayle, John Reynolds, Rebecca Bryant, and Corey Hayes in *Waiting for Godot*, directed by Maarten Reilingh, with lighting design by John Abegglen, sound design by William Rose, costume coordination by Jo Ann Ridney, costume technician: Diane Rathbun, scenic design by Gerry Wubben, property design by Carol Ann Gayle.

Theater awards were presented to Delwyne LaBrie, Gina Nixon, Corey Hayes, Rebecca Bryant, Riley Belile, Mitzi Primeaux, John T. Powell, Shane Harris, Shemica Hill, Missy Guidry, Rhonda Doland, Gwen McLendon, Helena Zaludova, Gerald Johnson, Lynette Braxton, Lori McKee, Rebecca Bryant, Danielle Roche, Kevin Driscoll, Gerry Wubben, Nowell Daste, Bill Rose, David O'Quinn, JoAnn Rigney, Brenda Kay, Nancy Shephard, Sabrina Shephard, Suzanne Simmons, Bette Talbot, Patricia Clarence, Stanley Coleman, Hu Robinson, Ed Alderman, Judi Guzzy, John McIntosh, Jennifer Buras.



Missy Guidry, Patricia Clarence, and Shemica Hill in *The Colored Museum*, directed by Brenda Kay and Susan Kelso, with light and sound design by John Abegglen, choreography by Nancy Shepard, costume design by Jo Ann Rigney, costume technician: Diane Rathbun, music conductor: Rick Condit, properties design by Carol Ann Gayle, slide design by Susan Kelso.



Becky White and Jason Berken in *Volpone*, directed by Susan Kelso, with light and scene design by John Abegglen, costume design by Nowell Daste, costume technician: Diane Rathbun, properties design by Carol Ann Gayle.



Gwen McLendon in *The Insect Comedy II*, directed by Susan Kelso, with light and sound design by John Abegglen, costume design by David O'Quinn, choreography by Carrie Smith, scenic and property design by Carol Ann Gayle (after initial sketches by Jaroslav Malina).

**STATE UNIVERSITY OF
NEW YORK AT OSWEGO**

Oswego, NY
APO Cast: Mu Iota

Mark Cole, faculty sponsor. Other faculty: William Russell Stark, Ron Medici. Officers: Juliana Hannett, President; Beth Elliott, Vice President; Mary Stephens, Business Manager.

Productions: *Our Country's Good*, *The Enchanted Pig*, *The Boys Next Door*, *Carnival!*

Beth Wren Elliott won the Olla Rickett Award for Excellence in Theater, awarded annually to a graduating senior.



Cast members in *Carnival!*, directed by Ron Medici, with scene design by William R. Stark, lighting design by Jeffery M. Whitsett, and costume design by Kitty Macey.



Left: Amanda Carney, Kevin Keating, Annory Brown, Lorraine Ernest, and Peter Stewart in *The Medium*, directed by Ron Medici, with scene and lighting design by Mincher/Stark Associates and costume design by Kevin Baratier.

Right: Damond C. Maxwell and Kristen Nobel in *Our Country's Good*, directed by Shannon Penrod, with scene design by William R. Stark, lighting design by Jeffery M. Whitsett, and costume design by Kitty Macey.



Paul Caroul, Deanna Raphael, Jennifer Hyman, Paul Cook, Beth Elliott, Natascha Corrigan, Amber O'Brien, and Jennifer Thompson in *The Enchanted Pig*, directed by Mark Cole, with scene design by Kevin Baratier, lighting design by Johan Godwaldt, and costume design by Kitty Macey.

MARIETTA COLLEGE

Marietta, OH
APO Cast: Eta Alpha



Cast members in *The York Nativity Play*, directed and designed by Clayton Stein.

Ron L. Loreman, faculty sponsor. Other faculty: Steve Rader, Clayton Stein, Julia Lee, Lisa Hill. Officers: Erin Murray, President; Rhona Loreman, Vice President; Rebecca Martin, Secretary/Treasurer.

Productions: *You're a Good Man, Charlie Brown*, *The York Nativity Play*, *Oleanna*, *Homeward Bound*, *Dark of the Moon*, *Scene From Married Life*, *The Madness of Lady Bright*.

Award winners for 1994-95 include Erin Murray, Charlie Knotte, Bronwyn Burger, Charla Nutter, Chris Craig, James Molholm, Rhonda Loreman, Eric Ostroff.



Brent Blackburn and Katie Anderson in *You're a Good Man, Charlie Brown*, directed and designed by Stephen Rader.



T. Zuckett, C. Maghes, J. Hoy, S. Weimer, K. Kleefeld, Charlie Knotte, Katie Anderson, S. Alsop, and B. Brysacz in *Dark of the Moon*, directed and designed by Stephen Rader.



Erin Murray and Charlie Knotte in *Oleanna*, directed and designed by Stephen Rader.



CONCORDIA COLLEGE

Seward, NE
APO Cast: Omega Lambda

Mira Wiegmann, faculty sponsor. Other faculty: Bruce Freed, Tim Sternberg. Officers: Rachel Klein, President; Charlie Lehmann, Secretary; Quentin Nuttmann, Business Manager.

Productions: *A Doll's House*, *A Few Good Men*, *On the Verge*.

Brenda Glenn, an APO member, was Concordia's nominee for an Irene Ryan competition of the ACTE.



Mollie Young, Rachael Klein, and Gretchen Straude in *On the Verge*, directed Mira Wiegmann, scene design by Jim Bockelman and costume design by Mary Beth Mertz.



Lucas Gerlach, Brenda Glenn, Jennifer Reimers, Tabetha Kraft, David Brinkmeyer, Paul Roggow, and Melanie Liebmann in *A Doll's House*, directed by Mira Wiegmann, with scene design by Ben Merrithew and Mira Wiegmann and costume design by Sherri Malzahn.



TAYLOR UNIVERSITY

Upland, IN
APO Cast: Beta Sigma

Oliver Hubbard, faculty sponsor. Other faculty: Jessica L. Rousselow.

Productions: *Big River*, *Lost in Yonkers*, *Macbeth*.



Zach Welsheimer and Jason Francis in *Big River*, directed and designed by Oliver Hubbard.



Katharine Wagner and Jason Francis in *Macbeth*, directed by Jessica L. Rousselow, with scene design by Oliver Hubbard and costume design by Jessica L. Rousselow.

APPALACHIAN STATE UNIVERSITY

Boone, NC
APO Cast: Lambda Zeta

Susan S. Cole, faculty sponsor. Other faculty: Ed Pilkington, Frank Mohler, Teresa Lee, Martha Marking, Linda Welden, Joel Williams. Officers: Dave Furr (Fall) and Derek King (Spring), President; Derek King (Fall) and Russell Poole (Spring), Vice-President; Russell Poole (Fall) and Meredith Gale (Spring), Secretary; Chris Graham, Business Manager.

Productions: *Arms and the Man*, *Fortinbras*, *Oleanna*, *Man of La Mancha*, *Mountain Memory*.



Richard Handy, Susan Simon, Russell Poole, and Kirk Hewitt in *Fortinbras*, directed by Teresa Lee, with scene design by Chet Longley and costume design by Allison Briden.



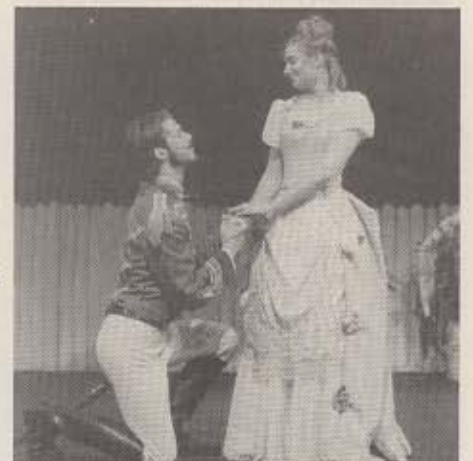
Jesse Padgett in *Man of La Mancha*, directed by Jean Cutler, with scene design by Frank Mohler and costume design by Martha Marking.



The Department of Theater and Dance at Appalachian State formed a coproduction partnership with the Charlotte Repertory Theater for *Oleanna*. The production of *Man of La Mancha* was done in cooperation with the School of Music at Appalachian State.



Jan Thrasher and Tara Madson in *Mountain Memory*, directed by Susan S. Cole, with scene design by Joel Williams and costume design by Derek King.



Right: Dave Furr and Sunny Penner in *Arms and the Man*, directed by Ed Pilkington, with scene design by Frank Mohler and costume design by Martha Marking.

AVERETT COLLEGE

Danville, VA
APO Cast: Chi Gamma

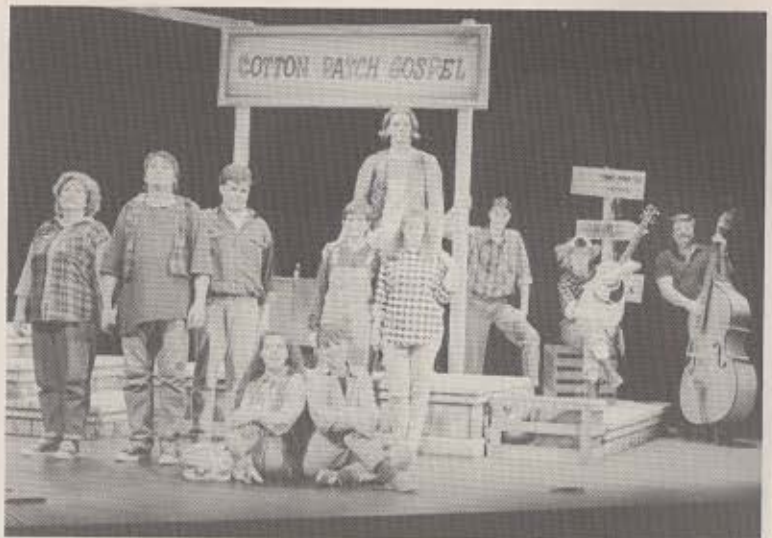
Jackie Finney, faculty sponsor. Other faculty: Hardy Koenig. Officers: David Nicewinter, President; Nelson Dent, Vice President.

Productions: *Cotton Patch Gospel*, *Jungal Book*, *Crimes of the Heart*.



Jennie F. Gwynn (Visiting Artist) and Nelson Dent in *Crimes of the Heart*, directed by Hardy Koenig, with scene and costume design by Jackie Finney.

Two scholarships were presented at the annual banquet induction on May 4th. Michael Obermueller won the Stribling Theatre Arts Scholarship (\$500) and Jesse Pottebaum won the Loras Players Scholarship (\$250). Nine new members of APO were inducted at the banquet.



Tonya Pettigrew, J. Scott Hedrick, Matt Sale, Wendy Thompson, Jananne Hancock, Lori B. Koenig, Tim Winkler, Cheri Adkins, Dan Veasey, Leigh Latchum, and Pat Hicks in *Cotton Patch Gospel*, directed by Hardy Koenig, with scene and costume design by Jackie Finney.

LORAS COLLEGE

Dubuque, IA
APO Cast: Loras Players

Don Stribling, faculty sponsor. Other faculty: Lauretta Stribling. Officers: Michael Obermueller, President; Aaron Beelner, Vice President; Tom Ksobiech, Secretary/Treasurer.

Productions: *Storybook Magic*, *Damn Yankees*.



Daphne Myers, Tom Ksobiech, Lisa Higgs, and Tom Heger in *Storybook Magic*, directed by Don and Lauretta Stribling, with scene design by Lauretta Stribling.

Left: The cast of *Damn Yankees*, directed by Don and Lauretta Stribling, with scene design by Don Stribling and costume design by Lauretta Stribling.



BERRY COLLEGE

Mt. Berry, GA
APO Cast: Kappa Delta

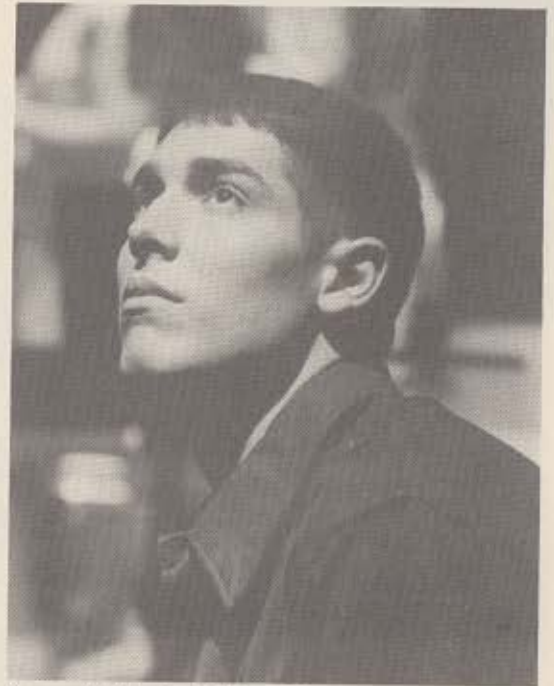
John Countryman and Lanny Potts, faculty sponsors. Officers: Michael Wakefield, President; Marci Millard, Vice President; Pam Richey, Treasurer; Anna Shirey, Parliamentarian; Pete Graham, Secretary.

Productions: *Godspell*, *The Importance of Being Earnest*, *A Different Moon*, *Guests*.

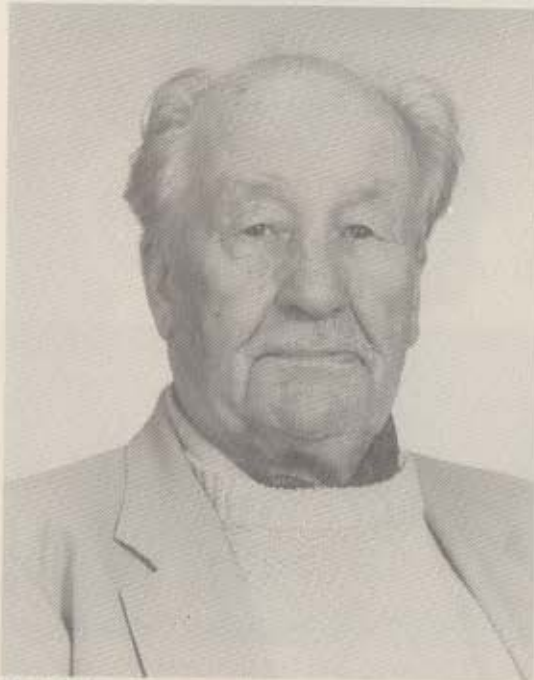
Molly Misseri won the Martha Anderson Biggers Award for 1994-95.



The cast of *Guest*, directed by John Stephens, with scene design by Lanny Potts and costume design by Sherry Harper-McCombs.



Cameron Watkins in *A Different Moon*, directed by John Countryman, with scene design by Lanny Potts and costumes design by Sherry Harper-McCombs.



John Boyd, author of *Guest*.



Left: Peter Graham and Chris Cline in *Godspell*, directed by Molly Misseri, with scene design by Kevin Moberly and costumes design by Julie Jones.

MARSHALL UNIVERSITY

Huntington, WV
APO Cast: Beta

Maureen B. Milicia, faculty sponsor. Other faculty: Mike Murphy, James Morris, N. Bennett East, Eugene J. Anthony, Leah Copley, Elaine A. Novak, Janis Martin. Officers: Amy Carrico, President; Jason Frye, Vice President; J. Randall Hicks, Treasurer.

Productions: *Annie Get Your Gun*, *A Shayna Maidel*, *Hobson's Choice*, *The Stages of Man*, *Of Mice and Men*, *On Golden Pond*, *A Coupla White Chicks Sitting Around Talking*, *Park Your Car in Harvard Yard*.

Student Tyler Tackett won third place in the USITT student design competition.



Brian Kidd, Ben Goldman, Trevor Long, and Kevin Pauley in *Of Mice and Men*, directed Eugene J. Anthony, with scene design by James Morris-Smith and costume design by Janis Martin.



Yvea Duncan and Lisa Riter in *A Coupla White Chicks Sitting Around Talking*, directed by Maureen B. Milicia, with scene design by James Morris-Smith.



Drew Johnson and Amy Carrico in *Annie Get Your Gun*, directed by Eugene J. Anthony, with scene design by Mike Murphy and costume design by Janis Martin.



Left: Steve Christian and Lynn R. Slavin in *On Golden Pond*, directed by Elaine A. Novak, with scene design by Jim Ferguson.



BETHANY COLLEGE

Lindsborg, KS
APO Cast: Zeta Zeta

Norman Schroder, faculty sponsor. Officers: Lynette Morse, President; Brian Yount, Treasurer; Carrie Gilbert, Historian.

Productions: *'Night, Mother, Noises Off, Into the Woods, J.B.*

Sven Hestrand and Peter Kim, both appearing in *J.B.*, were Irene Ryan nominees for ACTF.



Laura Krom, Jonathan Will, Cara Fakes, Holly Carr, Missy Smith, Jennifer Russin, Mindy Dorf, Sarah Smith, Sharon Shaffer, and Brandon Faulkner in *Into the Woods*, directed by Norman Schroder, with scene design by Randy Romero and Norman Schroder and costume design by Laura Krom and Broadway Costumes, Inc.



Phil Merz, Sven Hestrand, Jennifer Jones, Andrew Small, Jill Singley, Brian Yount, Stephanie Logan, William Franks, and Jennifer Phillips in *Noises Off*, directed and designed by Norman Schroder, with costume design by Jaymi Recknor.



MISSISSIPPI GULF COAST COMMUNITY COLLEGE

Gulfport, MS
DPO Cast: #359

Wayne Catlett, faculty sponsor. Other faculty: Denise Weatherly-Green. Officers: Shad Bookout, President; Mandy Bishop, Vice-President.

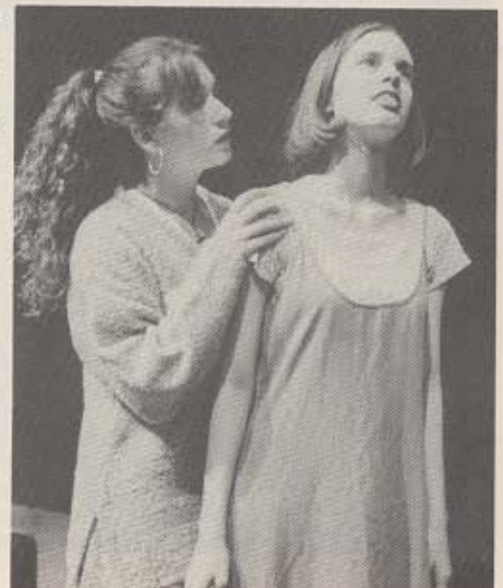


Productions: *The Voice of the Prairie, Brilliant Traces, The Person I Once Was.*

The Theater Award for Outstanding Contribution in Performance and Technical Theater was presented to Dori Garziano.

Right: Melissa Holliman and Mandy Bishop in *The Person I Once Was*, directed by Denise Weatherly-Green, with scene design by Wayne Catlett and costume design by Denise Weatherly-Green.

Left: Dori Garziano and Chris Green in *Brilliant Traces*, directed by Denise Weatherly-Green, with scene design by Wayne Catlett and costume design by Denise Weatherly-Green.



ANDERSON UNIVERSITY

Anderson, IN
APO Cast: Lambda Theta

Robert N. Smith, faculty sponsor. Other faculty: James O. Morehead. Officers: Drew Aaron, President; Cheryl Coake, Vice President; Laura Hitt, Secretary.

Productions: *The Lion in Winter*, *Tartuffe*, *Mandangling*, *The Nutcracker*, *The Music Man*, *The Mousetrap*.



Matt Hussong and Karen Baller in *Tartuffe*, directed by Robert Smith, with scene design by Robert Smith and Larissa Hittle, with costume design by Staci Bush.

Robert N. Smith retired at the end of the school year, concluding twenty-six years as Director of Drama at Anderson and a forty-two year career in educational theater. Robert was long-time faculty sponsor for APO at Anderson and will be missed!

Drew Aaron and Matt Hussong were awarded the Malcolm G. Gressman Senior Award, Larissa Hittle and Christa Shoot won the Malcolm G. Gressman Junior Award, and Dana Eaton and Susan Sharp were honored with the Robert Smith Freshman Award.

Left: Holly Laurent and Christa Shoot in *The Lion in Winter*, directed and designed by Todd Callen, with costume design by Bryce Shupe and Sandy Pelfrey.



Jonathan McLaughlin and Maggie Kleinhenn in *The Music Man*, directed by Robert Smith, with scene design by Robert Smith and Robert Helvering and costume design by Susan Sharp and the Ibsen Costume Gallery.



Left: Debbie Poole and Michael Casey Clark in *The Nutcracker*, directed by Lou Ann Young, with scene design by Larissa Hittle and costume design by Carma Shawger and Staci Bush.





The cast of *A Chorus Line*, directed by Billy Smith and Colleen A. Smith, with scene design by Billy Smith and costume design by Deirdre MacDonald.

WESTERN WYOMING COLLEGE

Rock Springs, WY
DPO Cast: #332

Billy Smith, faculty sponsor. Other faculty:
Colleen A. Smith, Deirdre MacDonald.
Officers: Scott Freeland, President; Corey
Greene, Secretary-Treasurer.

Productions: *A Chorus Line*, *Desert Dance
in Concert*, *Into the Woods*.

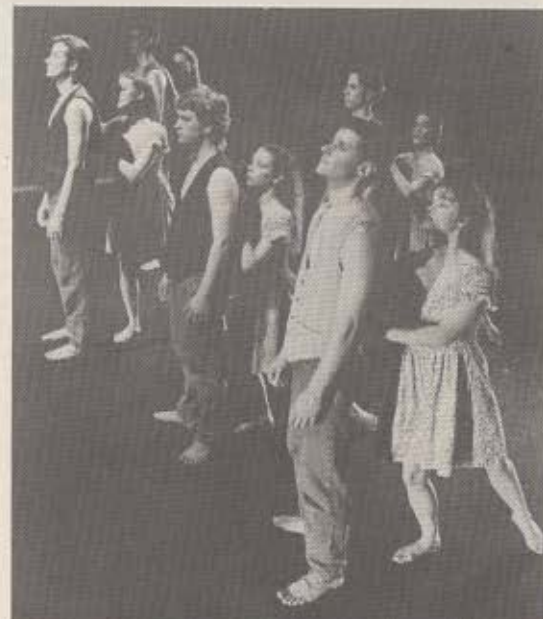
For 1994-95, Scott Freeland and Jessica
McLaughlin won the Distinguished Theater
Arts Award and Patricia Moe was awarded
the Outstanding Technician prize.



Jennifer Rouse and Emily Patton in *Into the Woods*, directed by Billy Smith and
Colleen A. Smith, with scene design by Billy Smith and costume design by Deirdre
MacDonald.



The cast of *A Chorus Line*, directed by Billy Smith and Colleen A.
Smith, with scene design by Billy Smith and costume design by
Deirdre MacDonald.



The cast of *Desert Dance Theater in Concert*, directed by
Colleen A. Smith, with lighting design by Billy Smith and
costumes design by Deirdre MacDonald.

HARDIN-SIMMONS UNIVERSITY

Abilene, TX
APO Cast: Zeta Theta

Larry Wheeler and James Ivey, faculty sponsors. Other faculty: Victoria Spangler, Cindy Mundschenck. Officers: Rodney Guenther, President; Sarah Minth, Vice President; Jeremy Moran, Secretary/Treasurer; Jennifer Molpus, Pledge Mother.

Productions: *Dearly Departed*, *The Voice of the Prairie*, *Story Theater*, *The Dining Room*, *Women and Wallace*, *The End of I*, *A Brief Period of Time*, *Haiku*, *Western Heritage Festival Theater*.

Awards to students for 1994-95 were presented to Stephen Madrid, Dustin McGee, Adrian Viccellio, Stephanie Lamb, Jeremy Moran, Jennifer Molpus, and Rodney Guenther. Faculty sponsors Larry Wheeler and James Ivey were also recognized. Wheeler was given the Cullen Award for Excellence in Teaching and Recognition for Dedication and Service to the Theater Department (in the construction of a lighting catwalk). Ivey received a Cullen Fund Grant in order to attend a movement workshop in St. Louis, MO.



The cast of *Story Theater*, directed by Victoria Spangler, with scene design by Larry Wheeler, lighting design by Tiffany Boot, and projections by Stephanie Lamb.



Left: Adrian Viccellio and Stephen Madrid in *The Voice of the Prairie*, directed by James Doyle, with scene design by Rodney Guenther, lighting design by Jennifer Molpus, and costume design by Sarah Minth.



Jennifer Molpus and Jason Solis in *The Dining Room*, directed by James Ivey, with scene and lighting design by Larry Wheeler and costume design by Jennifer Molpus.



Jennifer Simpson, Stephanie Lamb, Nathan Rouse, Mark Delucia, Tiffany Boot, Sarah Minth, Lana Lyon, Dustin McGee, Jason Solls, and Jeremy Moran in *Dearly Departed*, directed by James Ivey, with scene design by Larry Wheeler, lighting design by Sarah Minth, and costume design by Jennifer Molpus.

ALPHA PSI OMEGA AND DELTA PSI OMEGA PRESENT
GREAT MOMENTS!



Cordell Jordan, Holly Hammer, Lisa Mitchell, and Valery Moal in the Independence Community College production of *Joined at the Head*, directed by Gary Mitchell, with scene design by David D. Sherlock.



Right: Kelley Hughes in the Blinn College production of *Something's Afoot*, directed by Bradley A. Niles, with scene and special effects design by Donald Schwartz and costume design by Christa Freeman.



Danielle Monaro in the St. John's University production of *Once Upon a Mattress*, directed by Ed Guinan, with scene design by Donald Brooks, costume design by Jim Bidgood, and lighting design by Chris Davis.



James E. McClain and R. William Doughty in the Mineral Area College production of *The Grapes of Wrath*, directed by G. Richard Reney, with scene design by Stephen Gifford and costume design by Sandra Winick.



Right: Sandi Ludlow in the Oakland City University production of *Star-Spangled Girl*, directed by Margaret Earl Harper.



HARDIN-SIMMONS UNIVERSITY

Abilene, TX
APO Cast: Zeta Theta

Larry Wheeler and James Ivey, faculty sponsors. Other faculty: Victoria Spangler, Cindy Mundschenck. Officers: Rodney Guenther, President; Sarah Minth, Vice President; Jeremy Moran, Secretary/Treasurer; Jennifer Molpus, Pledge Mother.

Productions: *Dearly Departed*, *The Voice of the Prairie*, *Story Theater*, *The Dining Room*, *Women and Wallace*, *The End of I*, *A Brief Period of Time*, *Haiku*, *Western Heritage Festival Theater*.

Awards to students for 1994-95 were presented to Stephen Madrid, Dustin McGee, Adrian Viccellio, Stephanie Lamb, Jeremy Moran, Jennifer Molpus, and Rodney Guenther. Faculty sponsors Larry Wheeler and James Ivey were also recognized. Wheeler was given the Cullen Award for Excellence in Teaching and Recognition for Dedication and Service to the Theater Department (in the construction of a lighting catwalk). Ivey received a Cullen Fund Grant in order to attend a movement workshop in St. Louis, MO.



The cast of *Story Theater*, directed by Victoria Spangler, with scene design by Larry Wheeler, lighting design by Tiffany Boot, and projections by Stephanie Lamb.



Left: Adrian Viccellio and Stephen Madrid in *The Voice of the Prairie*, directed by James Doyle, with scene design by Rodney Guenther, lighting design by Jennifer Molpus, and costume design by Sarah Minth.



Jennifer Molpus and Jason Solis in *The Dining Room*, directed by James Ivey, with scene and lighting design by Larry Wheeler and costume design by Jennifer Molpus.



Jennifer Simpson, Stephanie Lamb, Nathan Rouse, Mark Delucia, Tiffany Boot, Sarah Minth, Lana Lyon, Dustin McGee, Jason Solis, and Jeremy Moran in *Dearly Departed*, directed by James Ivey, with scene design by Larry Wheeler, lighting design by Sarah Minth, and costume design by Jennifer Molpus.

ALPHA PSI OMEGA AND DELTA PSI OMEGA PRESENT
GREAT MOMENTS!



Cordell Jordan, Holly Hammer, Lisa Mitchell, and Valery Moal in the Independence Community College production of *Joined at the Head*, directed by Gary Mitchell, with scene design by David D. Sherlock.



Right: Kelley Hughes in the Blinn College production of *Something's Afoot*, directed by Bradley A. Niles, with scene and special effects design by Donald Schwartz and costume design by Christa Freeman.



Danielle Monaro in the St. John's University production of *Once Upon a Mattress*, directed by Ed Guinan, with scene design by Donald Brooks, costume design by Jim Bidgood, and lighting design by Chris Davis.



James E. McClain and R. William Doughty in the Mineral Area College production of *The Grapes of Wrath*, directed by G. Richard Reney, with scene design by Stephen Gifford and costume design by Sandra Winick.



Right: Sandi Ludlow in the Oakland City University production of *Star-Spangled Girl*, directed by Margaret Earl Harper.



ALPHA PSI OMEGA AND DELTA PSI OMEGA PRESENT
 MORE GREAT MOMENTS!



Brian Stemmler, Bradley T. Hellwig, and Brad Steinmetz in the Northeast Missouri State University production of *Of Mice and Men*, directed and designed by Ron Rybkowski, with costume design by Jennifer Cobb.



Right: Gina M. Wake and Rebecca A. Jones in the Lyon College production of *Keely and Du*, directed by Michael L. Counts, with scene design by Collin Brown and costume design by Alauna McMillen.



Benjamin Summers, Sarah Hankins, and Laura Seib in the Davidson College production of *The Learned Ladies*, directed by Rupert T. Barber, Jr., with scene design by Ronnie Higdon and costume design by Rupert T. Barber, Jr.



Matthew Monthei and April Simpson in the Asbury College production of *A Shayna Maidel*, directed by Steven L. Hudson, with scene design by Kellis C. Snodgrass, costume design by Jana Lavelle and Evelyn Wegner.



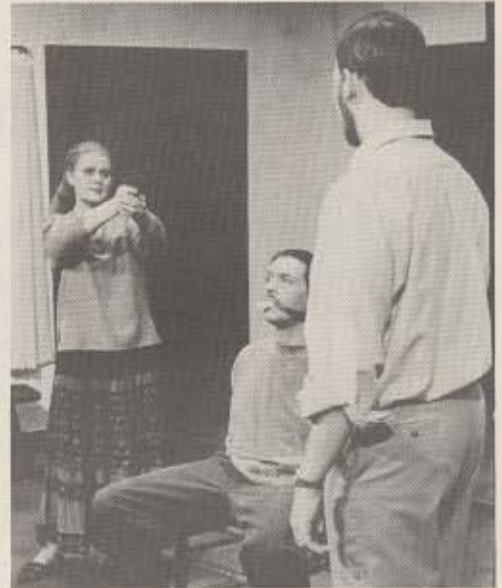
Right: Hilary Schuerger, David Trisel, Lucas Gutierrez, and Susan Reno in The Defiance College production of *The Bald Soprano*, directed and designed by Richard W. Thiede.



ALPHA PSI OMEGA AND DELTA PSI OMEGA PRESENT
STILL MORE GREAT MOMENTS!



Allison Kaplan, Stephanie White, Natalie DeBussy, H. Scott Gleason, Kristin Rapacki, Dan Gorgone, and Tim Calderwood in the Bentley College production of *Pippin*, directed and designed by Lisa Antonecchia.



Rebecca Blazer, McKamie Langston, and Andrew Stalter in the Drury College production of *Death and the Maiden*, directed and designed by Robin Schraft.



Steven Tosi, Jennifer D. Smith, and Tami Bell in the Lycoming College production of *The Lady's Not For Burning*, directed by Robert Falk, with scene and costume design by Jerry Allen.



Rebecca Audet, John Vasquez, Michelle Mazucco, Butch DiMinico, and Kerry Rosen in the Susquehanna University production of *A Chorus Line*, directed by Larry Augustine, with scene design by Herbert O'Dell and costume design by Carol Boone.



Right: Carl Berg, Stephen Cirbus, Heather Jenkins, and Michael Beers in the Genesee Community College production of *Binky Ruduch and the Two Speed Clock or the Revenge of the Space Pandas*, directed by Marcia K. Morrison.



ALPHA PSI OMEGA AND DELTA PSI OMEGA PRESENT
FINAL GREAT MOMENTS!



Seth Potter, Karl Houck, Chris Beck, Chris Fredericks, Rebecca Bryden, and Kelly Oxtan in the Hartwick College production of *Pippin*, directed and designed by Heidi Satter.



Treasure Shields-Redmond in the Jackson State University production of *The Colored Museum*, directed by Billie Jean Young with scene design by Bill Jaye Schooley.



Left: Delta Psi Omega members of the Coffeyville Community College cast. Their 1994-95 season included *The Dining Room*, *Love Bites*, *The Zoo Story*, and *You're a Good Man, Charlie Brown*. Mark Frank is faculty sponsor.



Marlys Moncure, Demetria McMorris, and Vickye Pulliam in the Jackson State University production of *Dreamgirls*, directed and designed by Bill Jaye Schooley.



Jill B. Herkel and Deborah L. Tyre in the Jacksonville University Production of *Agnes of God*, directed by J. Scott Berry, with scene design by Dan Robillard and costume design by J. Scott Berry.



A Tribute to
"The Bread and Puppet Theater"

by James Fisher



Paul Zaloom (kneeling in stove pipe hat), ringmaster of the "Domestic Resurrection Circus," begins the performance in front of a crowd of thousands at Glover, VT. Zaloom is also the star of the popular children's television show on science, *Beekman's World*, seen on the Nickelodeon channel.

This year, *Playbill* honors **The Bread and Puppet Theater**, a truly original and outstanding example of creativity and the art of the theater. Founded by Peter Schumann in 1960, the Bread and Puppet Theater mixes art, politics, sculpture, dance, puppetry, and spirituality in performances that intermingle satire and ritual. A highly topical company, the Bread and Puppet Theater also owes much to the traditions of classical theater forms.

Schumann's visions present a simple and stereotypical view of humanity: living and dancing sculptures and startling masks of gentle and suffering victims oppressed by the demons of power and greed, cruelty and militancy; the caricatures of his puppets and

mask are, as he has written, a "Denunciation of a status quo reality." The cumulative results of such a theater is rejuvenating an "explosive joy particular to those who know they are doomed."

The Bread and Puppet style is that of current satire of political and social circumstances, served up through carnival techniques, occasional bursts of inspired improvisation, and broad iconic characterizations used in the creation of spiritually redemptive visual symbols and images. There is a uniquely non-professional quality to their performances and the materials employed by them—an actor does not just act, but is pressed into service for any job at any time; the actor and his physical creations thus become a tool to assist the audience, also pressed into service beyond its usual requirements to not only witness an extravaganza, but to imagine a different world through this uniquely communal medium.

The plight of Schumann's puppets, whatever their size, shape, or color, and however they may be manipulated in performance, is our plight—the struggle of living and the struggle of living together. Whatever the source—ancient or modern or both—they provide us the chance to step outside of ourselves and to view our dilemma in simple but profound situations. The result is almost shocking in its power and force. As Edward Hoagland has written, "they do reach veins of feeling in us that are deeper than words." The Bread and Puppet's use of puppets and masks is something of a rediscovery of forgotten tools of the stage that allow performers to reinvent the theatre—it is true symbolism, the remaking of simple objects to give them a meaning well beyond the familiar. What various artists, from Alfred Jarry,



Puppets and masks on display at **The Bread and Puppet Theater Museum** at Glover, VT.

Edward Gordon Craig, and William Butler Yeats to Peter Brook, Ariane Mnouchkine, and Robert Wilson have sought from puppets and masks and ritualized symbols in order to reach beyond the realistic stage comes to full fruition in Schumann's Bread and Puppet Theater. In the modern era, Ibsen invited the audience to move away from light entertainments and empty spectacles to a conscious and thinking stage; Chekhov offered the opportunity to see the real world in a symbolic light; Stanislavsky brought in an emphasis on emotional truth; Strindberg, Pirandello, and O'Neill dealt in the unconscious mind; Meyerhold and Brecht insisted on the politicized angle; Beckett, Ionesco, and Albee presented an absurd existentialist view—Schumann contributes a return to ritual and religiosity to restore the emotional power of the unspoken myths of our lives.



A performer with **The Bread and Puppet Theater** waves a banner while on stilts welcoming visitors to the annual "Domestic Resurrection Circus" held in Glover, VT.



Puppets and masks on display at **The Bread and Puppet Theater Museum** at Glover, VT.



The puppet of peace dominates the Evening Ritual of the "Domestic Resurrection Circus" of **The Bread and Puppet Theater** at Glover, VT.

HISTORY OF ALPHA AND DELTA PSI OMEGA

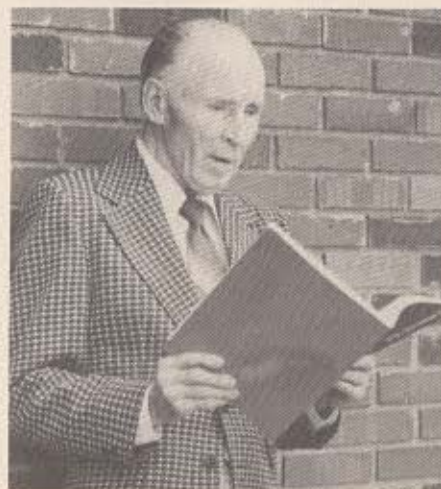
The organization, development, and growth of **Alpha Psi Omega** and **Delta Psi Omega** is a result of the wide-spread interest of colleges and universities of America in dramatic arts in the early twentieth century. By 1920 most colleges had some kind of a dramatic club that was staging annual play productions for students and the local community. The little theatre movement and dramatic workshop idea made its appearance about that time and greatly stimulated the development of college drama and promoted its significance. This was especially true in western colleges, and by 1920 several national honor fraternities to recognize and reward student participation in play production had been organized.

Alpha Psi Omega, the first of these societies to be founded in the East, was organized at Fairmont State College in Fairmont, West Virginia on August 12, 1925. The college theatre idea had begun to manifest itself in Fairmont about 1921, and, in 1923, a faculty director was employed, and an organization called the Masquers was instituted to present an annual program of four or five major productions for students and the public. In 1924, the Masquers began to consider membership in some national honor society in dramatics as a means of rewarding its most faithful and loyal workers. Plans for forming such a national organization were seriously studied by a committee composed of Elinor B. Watson, Robert Sloan, and Paul F. Opp, faculty director of dramatics at Fairmont. A proposed national constitution was drawn up, and, on August 12, 1925, those members of the Masquers who met the qualifications of the honor society approved the constitution and adopted the name, **Alpha Psi Omega**. It was decided that each chapter was to be called a "cast", and Fairmont became Alpha Cast. The interest of Marshall College in Huntington, West Virginia assured the immediate national character of **Alpha Psi Omega** with the establishment of Beta Cast. A member of Beta Cast suggested the name *PLAYBILL*, for the national magazine.

During the course of the next year, eighteen new chapters were admitted, and twenty chapters were on the roll at the time of the meeting of the first national convention, at the Palmer House in Chicago, Illinois, on December 27-28, 1926. National conventions, called Grand Rehearsals, were held every five years. The organization now meets annually at the Southeastern Theatre Conference.

Alpha Psi Omega has sponsored the formation of honor societies in high schools and junior colleges, thus encouraging dramatic production at every step in a student's career, from the preparatory school to college graduation. **Delta Psi Omega** was organized among the junior colleges in 1929, and now has a membership of more than 350 chapters. The **Alpha Psi Omega** Grand Rehearsal meeting at St. Louis in 1936 voted to recognize **Delta Psi Omega** as an affiliated junior college division. **Alpha Psi Omega** has enjoyed continuous national growth, and with over 550 chapters is the largest national honor society in America. Membership in **Alpha Psi Omega** is granted only to fully accredited institutions with a four-year curriculum in theatre and drama leading to a degree.

The business of **Alpha Psi Omega** and **Delta Psi Omega** is supervised by national officers. Such names as Paul Opp, Yetta Mitchell, and Donald Garner are familiar to longtime member casts as officers in earlier years. Current officers are Jerry Henderson (President), Susan S. Cole (Vice President), and James Fisher (National Business Manager and Editor of *Playbill*).



Paul F. Opp, founder of **Alpha Psi Omega** and **Delta Psi Omega**.

Alpha Psi Omega

Delta Psi Omega



Illustration: *Punchinello as a Puppeteer*

PLAYBILL