

PLAYBILL



Alpha Psi Omega

and

Delta Psi Omega

Volume LXVIII, 1994



ALPHA PSI OMEGA
National Honorary Dramatic Fraternity
Founded in 1925

Summer 1994

Dear Casts of Alpha Psi Omega and Delta Psi Omega,

Greetings from the National Office of Alpha and Delta Psi Omega! I continue to treasure the opportunity I have to speak with many of you during the school year as you plan your initiation ceremonies and other exciting events.

For the sixty-eighth year, PLAYBILL celebrates the diverse and important theatre production work of our Alpha and Delta Psi Omega casts throughout the United States. I was particularly impressed this year by the increasing awareness to multi-cultural and cross-gender casting evident in your production photographs. As always, there is significant representation of both classic and contemporary plays, new works, and foreign as well as American plays.

The casts of Alpha and Delta Psi Omega continue to have much to take pride in as actors, designers, playwrights, directors, technicians, dancers, front-of-house personnel and as students and teachers.

I know I speak for our president, Jerry Henderson, and vice-president, Susan Cole, when I express the pride the National Office of APO and DPO feels for our talented and active casts!

I look forward to hearing from you during the coming year. It is my hope that you will enjoy this year's issue of PLAYBILL, and that you will remember to put aside good photographs of your productions during the 1994-95 season for subsequent submission to PLAYBILL.

If you have any questions or concerns, please do not hesitate to contact me at (317) 364-4394 (E-mail: FisherJ@Wabash.EDU).

Wishing you all the best for the coming year,

James Fisher
Editor, PLAYBILL
National Business Manager, APO, DPO

Jerry Henderson
President
Pepperdine University
Malibu, CA 90265

Susan S. Cole
Vice President
Appalachian State University
Boone, NC 28608

James Fisher
National Business Manager
Wabash College
Crawfordsville, IN 47933

ALPHA PSI OMEGA and DELTA PSI OMEGA Playbill

TABLE OF CONTENTS

History of Alpha Psi Omega and Delta Psi Omega	Inside back cover
Letter from the National Business Manager	Inside front cover
Table of Contents	1, 2
A Tribute to the "Master Artist of the Theatre"	31, 32

The APO/DPO Casts:

Albertson College	13
Alderson-Broaddus College	9
Anderson University	13
Appalachian State University	12
Arkansas College	30
Asbury College	16
Bethany College	29
Blinn College	28
Carson-Newman College	8
Centenary College of Louisiana	3
Dakota Wesleyan University	9
Davidson College	27
The Defiance College	30
Drury College	26
East Texas Baptist University	27
Elizabeth City State University	18
Elizabethtown College	16
Genesee Community College	29
Grand View College	22
Hardin-Simmons University	17
Hartwick College	30
Holmes Community College	8
Howard Payne University	30
Independence Community College	26
Jacksonville University	15
Lander University	28
Loras College	18
Lynchburg College	4
Marquette University	11
Marshall University	23
McNeese State University	6



Meredith College	27
Miami University	19
Millikin University	20
Mineral Area College	29
Mississippi College	26
Mississippi Gulf Coast Community College.....	25
Missouri Southern State College	5
Morningside College	27
Mount Union College	24
Muskegon Community College	26
Northern Oklahoma College	22
Okaloosa-Walton Community College	28
Samford University	11
State University of New York at Cobleskill	14
State University of New York at Fredonia.....	15
State University of New York at Oswego	19
St. John's University	29
Taylor University	21
Union College	28
Union University	4
University of Richmond	25, back cover
University of Wisconsin — River Falls	14
Wabash College	7
Washington and Jefferson College.....	6
Western Wyoming College	10
Whittier College	24



Front Cover illustration: "Mask of Fool" designed in 1911 by Edward Gordon Craig (1872-1966) for William Butler Yeats' play **The Hour Glass**, produced at the Abbey Theatre.

ALPHA PSI OMEGA and DELTA PSI OMEGA Officers — Jerry Henderson (President), c/o Department of Theatre and Speech, Pepperdine University, Malibu, CA 90265; Susan S. Cole (Vice President), c/o Department of Theatre and Speech, Appalachian State University, Boone, NC 28608; James Fisher (National Business Manager and Editor of PLAYBILL), c/o Theater Department, Wabash College, Crawfordsville, IN 47933. Grateful acknowledgment to Marge Jackson and Roy E. Sexton for assistance in preparing and mailing PLAYBILL.

PLAYBILL is published annually by Alpha Psi Omega and Delta Psi Omega to afford college and university theatre organizations the opportunity to acquaint themselves with what is being done by their contemporaries and to serve as the official organ of this honorary fraternity. Direct all business communications to: James Fisher, National Business Manager of APO/DPO, c/o Theater Department, Wabash College, Crawfordsville, IN 47933. Phone: (317) 364-4394. E-mail: FisherJ@Wabash.EDU.

The Jerome Lawrence and Robert E. Lee Theatre Research Institute at Ohio State University houses the archives of Alpha Psi Omega and Delta Psi Omega. Alpha Psi Omega and Delta Psi Omega gratefully acknowledges the assistance of the Institute. The archival materials include back issues of PLAYBILL and other APO/DPO publications, photographs and other ephemera. Information can be obtained by writing to: The Jerome Lawrence and Robert E. Lee Theatre Research Institute, The Ohio State University, 1800 Cannon Drive, Columbus, OH 43210-1230. Phone: (614) 292-6614.

CENTENARY COLLEGE OF LOUISIANA

Shreveport, LA
APO Cast: Delta Iota

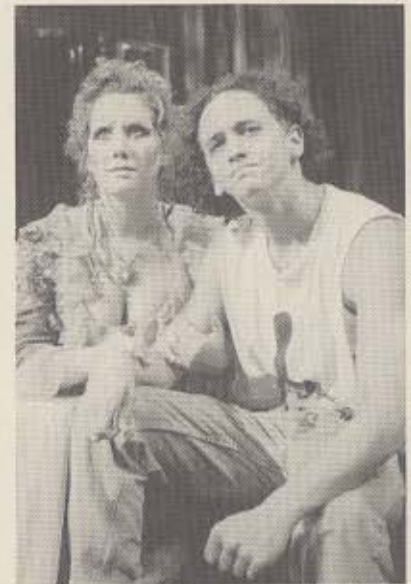
Robert R. Buseick, faculty sponsor. Officers: J. P. Byrd, President; Heather Peak, Vice President and Treasurer; Paul Belcher, Sgt. at Arms. Faculty and Staff: Don Hooper, Rona Leber, Patric McWilliams, Ginger Folmer, Angie McWilliams.

Productions: **The Women, On the 20th Century, Camino Real, Lips Together, Teeth Apart, Talk Radio, Dancing at Lughnasa.**

Rivertown Players Awards (given to actors, etc. appearing during Centenary's academic theatre season): Actor (Youree McBride, Jr. for Talk Radio), Actress (Katie Hall for Lips Together, Teeth Apart), Supporting Actor (J. P. Byrd for Talk Radio), Supporting Actress (Heather Peak for Lips Together, Teeth Apart), Minor Role Actor (Leonard Yokum for Talk Radio), Minor Role Actress (Stephanie Huffman for Talk Radio), Creative Achievement (Paul Belcher for his set design for Talk Radio), Technical Achievement (Katie Hall for assistant direction and stage management of Talk Radio).



*Celia Jones, Christy Bickham and Julia Joffrion in **The Women**, directed by Robert Buseick, with set and lighting design by Don Hooper and costume design by Patric McWilliams.*



*Heather Peak and Youree McBride, Jr. in **Camino Real**, directed by Robert Buseick, with set design by Don Hooper, costume design by Patric McWilliams, and lighting design by J. P. Byrd.*



*Heather Peak, Joy Pace, Katie Hall, Brooks Ann Camper and Candace Higginbotham in **Dancing at Lughnasa**, directed by Robert Buseick, with set and lighting design by Don Hooper and costumes by Patric McWilliams.*



*Ruth Varady, Leonard Yoekum, Patric McWilliams, Bobby Darrow, John Matthews and Gale Odom in **On the 20th Century**, directed by Robert Buseick, with set and lighting design by Don Hooper, costumes by Patric McWilliams and choreography by Aaron Girlinghouse.*

LYNCHBURG COLLEGE

Lynchburg, VA
APO Cast: Epsilon

Jeff Wittman, faculty sponsor. Officers: Lawrence Moses, President; Rebekah Chodoff, Vice President; Krista Agar, Secretary-Treasurer; Dawn Rutledge, Banquet Chair. Faculty and Staff: Tom Nowell, Loretta Wittman, Connie Blackwell, Laurie Cassidy.

Productions: **The Dining Room, Tintypes, Baby, Hello Out There.**



*B.J. Lawless and Ashley Borden in **Baby**, directed by Jeff Wittman.*



*Lawrence Moses, Elizabeth Bunnell, Krista Agar, Jenny Sandman in **The Dining Room**, directed by Jeff Wittman.*

UNION UNIVERSITY

Jackson, TN
APO Cast: Beta Mu

David Burke, faculty sponsor. Officers: Ashley Fitch, President; Mac Lower, Vice President; Jimmy Wilhelm, Treasurer; Ellen McCroskey, Social Chair. Faculty and Staff: Barbara Blackwood, Evelyn Keele.

Productions: **All My Sons, Galley Proof.**

The Elizabeth B. Lloyd Awards were presented to Russ Pflasterer (Best Actor), Christina Hobbs (Best Actress), Mac Lower (Best Supporting Actor), Joye Johnson (Best Supporting Actress), Steven Buback (Director's Award for technical work), Jimmy Wilhelm (Union University Player's Award for special service to the theatre), Ashley Blair (Alpha Psi Omega Senior Award for the senior who has contributed the most to the theatre program).



*Joye Johnson, Angela Clanton and Christina Hobbs in **Galley Proof**, directed by David Burke, with scene design by David Burke and costumes by Barbara Blackwood.*



*Russ Pflasterer in **All My Sons**, directed by David Burke, with scene design by David Burke and costumes by Evelyn Keele.*

MISSOURI SOUTHERN STATE COLLEGE

Joplin, MO

APO Cast: Upsilon Omicron

Sam Claussen, faculty sponsor. Officers: Lawrence Alford, President; Jennifer Carroll, Vice President; Lori Morris, Secretary; Cheryl Michel, Treasurer; Bill Watts, Historian. Faculty and Staff: Jay Fields, Anne Jaros, Duane Hunt.

Productions: **Love Letters**, **Like Father**, **The Boys Next Door**, **Graceland/Asleep**, **The Ant and the Grasshopper**, **Quilters**, **Tom Sawyer**.



Brandon Davidson and Victoria Goff in **The Boys Next Door**, directed by Jay Fields, with scene design by Sam Claussen and costumes by Anne Jaros.



Lori Morris and Jennifer Russell in **Graceland**, directed by Duane Hunt, with scene design by Sam Claussen and costumes by Imma Curl.



Tabitha Davison, Pat Worley, Nikki Kellison and Lawrence Alford in **Like Father**, directed by Steve Mandeville, with scene design by Mike Smith and costumes by Jennifer Carroll.



Brandon Davidson, Jonathan Peck, Nikki Kellison and Grant Miller in **The Ant and the Grasshopper**, directed by William R. Watts, with scene design by Shawn Irish and costumes by Jennifer Carroll.

McNEESE STATE UNIVERSITY

Lake Charles, LA
APO Cast: Phi Gamma



Carrie Smith as Kate Hardcastle in *She Stoops to Conquer*, directed by Maarten Reilingh, with scene and lighting design by Dennis Christilles, costumes and wigs by Thomas Augustine, and makeup design by Karen Christilles.

Dennis Christilles, faculty sponsor. Officers: Joetta Foshee (Fall) and Michelle Olivier (Spring), President; Michelle Olivier (Fall) and Steven Kleyle (Spring), Vice President; Nye Cooper, Secretary; Sarun Keller (Fall) and Carrie Smith (Spring), Treasurer. Faculty and Staff: Susan Kelso, Maarten Reilingh, Anita Tritico, Karen Christilles.

Productions: **She Stoops to Conquer**, **The Conduct of Life**, **Lucky Stiff**, **The Insect Comedy**, **Out of Our Fathers' House**.



Delwyne La Brie and Carol Ann Gayle in *Lucky Stiff*, directed by Scott Hutcheson, with musical direction by Michele Martin, scene design by Dennis Christilles, costume and makeup design by Karen Christilles, and lighting design by Jayce Bosman.

WASHINGTON AND JEFFERSON COLLEGE

Washington, DC
APO Cast

William Cameron, faculty sponsor. Officers: Dennis Fraley, President; Susan Gillette, Vice President, Tom Nesbit, Historian. Faculty and Staff: Dan Shaw.

Productions: **One Flew Over the Cuckoo's Nest**, **Vanities**, **Smile**.



Caroline Bradal, Tom Nesbit, Jerome Kennedy, Patrick McDade and André Bryant in *One Flew Over the Cuckoo's Nest*, directed by William Cameron, with scene design by Dan Shaw.



Jacob Wyland (center) with "Young American Miss" Contestants in *Smile*, directed by William Cameron, with scene design by Dan Shaw and costume design by Kathleen Mitchell.

WABASH COLLEGE

Crawfordsville, IN
APO Cast: Scarlet Masque

James Fisher, faculty sponsor. Officers: Patrick Beidelman, President; Roy E. Sexton, Vice President; Emilio Robles, Secretary. Faculty and Staff: Dwight E. Watson, Lonna Wilke, Laura Conners.

Productions: The Merchant of Venice, El Salvador, A Flourish of One-Act Plays, The Battle of Shallowford.

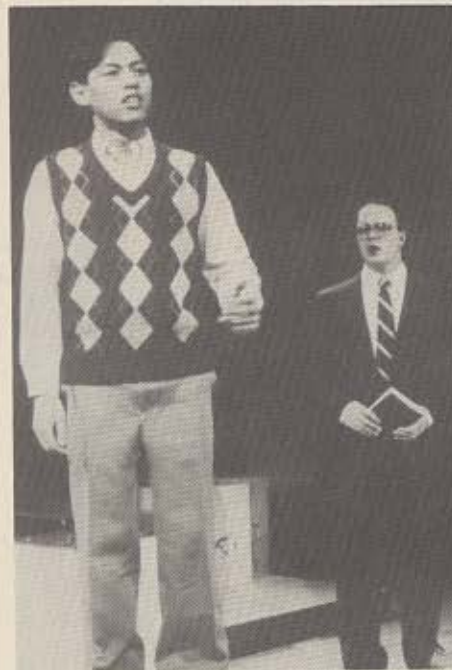


Jason Owens, Ben Champ, Marco Noyola, and Tom Harvey in El Salvador, directed by Patrick Beidelman, with scene and lighting design by Lonna Wilke and costume design by Laura Conners.

The Wabash College Theater Department moved into new facilities in the completing renovated Fine Arts Center, which now houses the departments of Art, Music, Speech, and Theater. The Theater Performance Award was presented to Steve Martin and the Theater Technical Award to Matt Bottoms. Patrick Beidelman won the Phi Beta Kappa Prize for his direction of *El Salvador*. *A Flourish of One-Act Plays* featured a new play by Theater Department Chair Dwight E. Watson, and several student-written plays.



Roy E. Sexton and Patrick Beidelman in The Battle of Shallowford, directed by James Fisher, with scene and lighting design by Lonna Wilke and costume design by Laura Conners.



Joe Lopez and Michael Czerwicz in Waiting Room Philosophies, written and directed by Steve Martin, with scene and lighting design by Lonna Wilke and costume design by Laura Conners.



Guest actress Daria Martel (foreground) and Emilio Robles in The Merchant of Venice, directed by Dwight E. Watson, with scene and lighting design by Lonna Wilke and costume design by Laura Conners.



CARSON-NEWMAN COLLEGE

Jefferson City, TN
APO Cast: Eta Beta Cast

Productions: **The King and I, Take Five, A DoLittle Christmas, Booth.**

The Communications Arts Classes named the following award winners: Ron Hartsell II (Best Actor) and Julie Cordell (Best Actress). The Alpha Psi Omega membership voted the following awards: Ron Hartsell II (Best Actor), Mitzi Price (Best Actress), and Laura Craver (Most Valuable Member).

John Lee Whelton, faculty sponsor.
Officers: Warkenda Gaybrella William President; Ross Lee Chappell, Vice President; Laura Elizabeth Craver, Secretary and Treasurer; Mitzi Ann Price, Parliamentarian and Historian.



Jennifer Peters, Andy Winstead, and Philip Dorr in *Booth*, directed by John Lee Whelton, with scene design by John Lee Whelton and costume design by Laura Craver.



Jill Hobby, Heather Mishler, and Michael Turner in *The King and I*, directed by John Lee Whelton, with scene design by John Lee Whelton and costume design by Denice King and Nancy Wofford.

HOLMES COMMUNITY COLLEGE

Goodman, MS
DPO Cast: #245

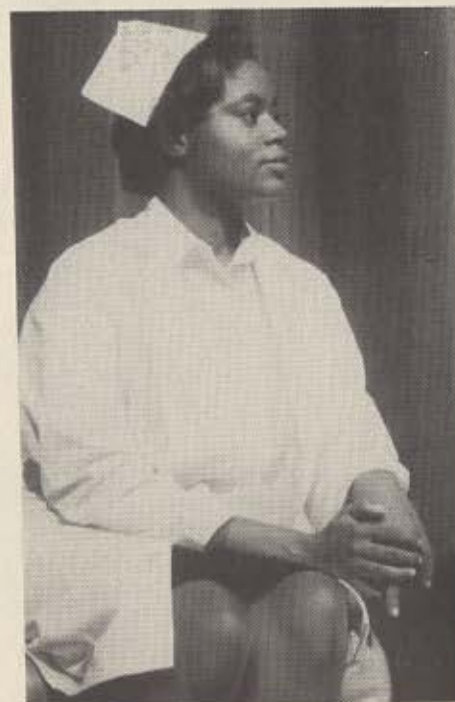
Rita A. Jones, faculty sponsor. Officers: Clay McRae, President; Jon Rost, Vice President; Katrina Clark, Secretary.



Jon Rost in *Oklahoma!*, directed by Rita A. Jones, with scene design by Rita A. Jones and Gary Sheppard and costume design by Juanita Jones.

Productions: **Harvey, Oklahoma!**

Awards were presented as follows: Tanya Self (Holme-Towne Player Award), Tanya Self and Clay McRae (Troupers of the Year Award), Tanya Self (Best Actress in Comedy), Clay McRae (Best Actor in Comedy), Molly Simpson (Best Actress in Musical), Jay Price (Best Actor in Musical), Eddie Koeder (Best Supporting Actor in Comedy), Clay McRae (Best Supporting Actor in Musical), Stephanie McCombs (Best Supporting Actress in Comedy), Glen Trute (Best Actor in Major Minor Role), Marcell Berry (Best Performance in Major Minor Role in Musical), Brady Richardson (Best Actor in Minor Role in Musical), Nikki Pace (Best Actress in Minor Role in Musical), Casey Wallace (Best Actress in Non-Speaking Role in Musical), Mike Yates (Best Actor in Non-Speaking Role in Musical).



Katrina Clark in *Harvey*, directed by Rita A. Jones, with scene design by Rita A. Jones and costume design by Juanita Jones.

ALDERSON-BROADDUS COLLEGE

Philippi, WV
APO Cast: Delta Gamma



Alderson-Broaddus award winners: Julie Furrow, Tedd Cogar, Jenny Goltz, John Gawthrop, Tammy Weber, and Faith Bevin.

Alma J. Bennett, faculty sponsor.
Officers: Lisa Omps, Cast Director;
Brock Perkins, Business Manager; Loa
Allebach, Stage Manager; Mike Ludle,
Historian.

Productions: **Agnes of God, Mass
Appeal, Frog Songs, She Ventures and
He Wins.**



Jennifer Goltz in *Agnes of God*, directed and
designed by Alma J. Bennett.

Awards were presented to Brock Perkins (College Player of the Year), John Gawthrop (Best Actor), Jenny Lantz and Tammy Weber (Best Actress), Tedd Cogar (Novice of the Year), Julie Furrow (Best Tech), Faith Bevin (Best Supporting Actress).



DAKOTA WESLEYAN UNIVERSITY

Mitchell, SD
APO Cast: Omega Alpha



Paula Boyd as Laura in *The Glass Menagerie*,
directed by Darryl F. Patten, with scene design by
Arden Weaver.



Mary Scott, Nicole Morrison, and Elizabeth Wild in *Land of the Dragon*, directed and designed by Darryl F. Patten.

Darryl F. Patten, faculty sponsor. Officers: Stanton Bockwoldt, President; Gen Clark, Secretary-Treasurer.

Productions: **The Mousetrap, Land of the Dragon, The Glass Menagerie.**

Theatre awards were given to Jason Scott (Best Actor), Ralyna Schilling (Best Actress), Howard Gunston (Best Supporting Actor), Paula Boyd (Best Supporting Actress), Andrew Arhart (Best Male Cameo), Mary Scott (Best Female Cameo).

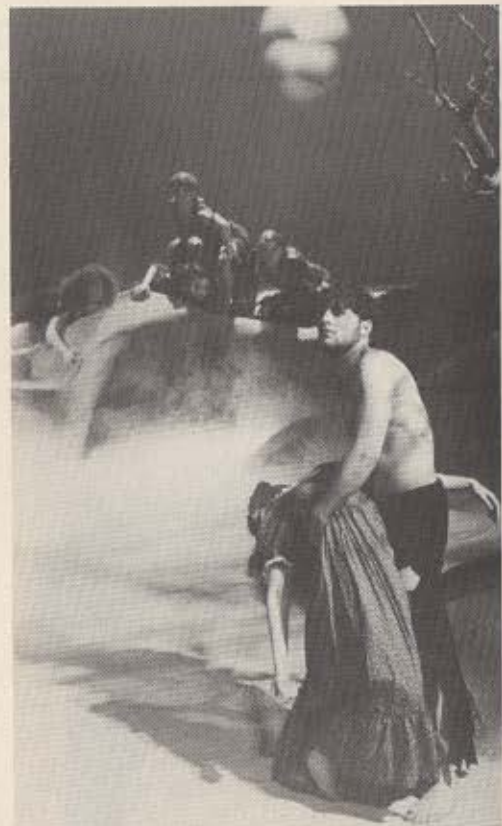
WESTERN WYOMING COLLEGE

Rock Springs, WY
APO Cast: Epsilon

Billy Smith, faculty sponsor. Officers: Scott Freeland, President; Corey Greene, Secretary-Treasurer. Faculty and Staff: Colleen A. Smith.

Productions: **Dark of the Moon**, **West Side Story**, **Desert Dance Theatre in Concert**, **Smile**.

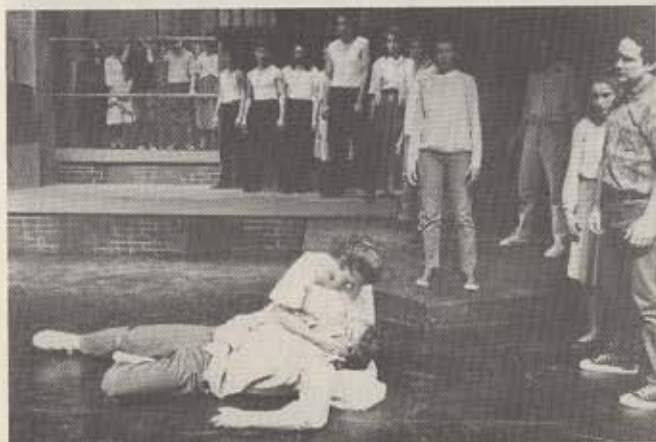
Awards were presented to Krisen Wagner (Distinguished Theatre Arts Award) and Darcy Fowers (Outstanding Dance Student). The Western Wyoming College Department of Theatre and Dance has grown in the past year. They have recently started utilizing MIDI (Musical Instrument Digital Interface) for producing musicals. The department has also continued to run the regional High School Auditions for the Rock Mountain Theatre Association at Festivention, the annual conference. The Dance portion of the program received regional and national recognition this past year when it was selected to perform on the Collaborative Dance Concert at Festivention '94 and at the National Dance Association's National Gala in Denver last April. The program has also recently begun a Musical Theatre major.



Amanda Jussila, Wendy Dawn Luck, Krisen Wagner, Cynthia McCoy, Kelly Lawson, and Daryl Olson in *Dark of the Moon*, directed by Billy and Colleen Smith, with scene design by Billy Smith and costume designs by Deirdre MacDonald.



Jessica McLaughlin, Ken Tsurumaki, Corey Greene, Darcy Fowers, and Jennifer Bredehoft in *Desert Dance Theatre in Concert*, directed by Colleen Smith, with scene design by Billy Smith and costume design by Deirdre MacDonald.



Ken Tsurumaki, Izuru Atsumi, Corina DeBeltz, Daryl Olson, Darcy Fowers, Yorihiro Shimoda, Shannon Galvin, Scott Freeland, Jennifer Schunk, Nathan Woods, Christy Young, and Mike Curtis in *West Side Story*, directed by Billy and Colleen Smith, with scene design by Billy Smith and costume design by Deirdre MacDonald.



Darcy Fowers and Jessica McLaughlin in *Smile*, directed by Billy and Colleen Smith, with scene design by Billy Smith and costume design by Deirdre MacDonald.

SAMFORD UNIVERSITY

Birmingham, AL
APO Cast: Tau Lambda

Barbara and Eric Olson, faculty sponsors.
Officers: Mary Ann Taylor, President;
Jesse Tilton, Vice President; Shawn
Castle, Secretary; Shannon Bowman,
Treasurer. Faculty and Staff: Harold
Hunt, Jan Morris.

Productions: **Endgame, Dear Brutus,**
Six Characters In Search of An
Author, Becoming Memories.



*Billy Spivey, Patrick Jones and cast members of **Six Characters In Search of An Author**, directed by Jan Morris, with costume design by Barbara Olson.*



*Cast members of **Becoming Memories**, directed by Harold Hunt, with scene design by Eric Olson and costume design by Barbara Olson.*

Awards went to Brad Jones and Lucy Jones (Outstanding Theatre Freshmen), Billy Spivey (Gail Patrick Directing Award), Sandi Norwood (Tony Sparks Excellence in Theatre Award), Amy Mixon and Carrie April Tillis (Performances by Actresses), and Billy Spivey, Leslie Kinderman, Jesse Tilton, Sara Herron, Travis Hawkins, and Patrick Jones (Excellence in Acting Awards).



MARQUETTE UNIVERSITY

Milwaukee, WI
APO Cast: Tau Omega

Kenneth Kloth, faculty sponsor. Faculty and Staff: Michael Price, Michael Abbott, Cathy Kaiser, Debra Krajec, Patricia Lersch, Robert Liebhauser, Richard Nebel, Wesley Savick, Gerald C. Walling, Darci Wutz.



*Rachel Olsen, Peter Mulvey, and Brian Osborne in **A Lie of the Mind**, directed by Michael Abbott, with scene and lighting design by Kenneth Kloth and costume design by Robb Gries.*

Productions: **A Lie of the Mind, Mother Courage and Her Children, Cinderella, Tartuffe, Dracula.**



*Gerald Neugent, Christopher Wolk, and Joshua Gilbert in **Tartuffe**, directed by Debra Krajec, with scene and lighting design by Kenneth Kloth and costumes by Erin Slattery.*

APPALACHIAN STATE UNIVERSITY

Boone, NC
APO Cast: Lambda Zeta



The cast of Godspell, directed by Ed Pilkington, with scene and lighting design by Frank Mohler and costume design by Martha Marking.

Susan S. Cole, faculty sponsor. Officers: Stephen Corbett, President; Chet Longley, Vice President; Carol Barlow, Secretary; Piper Pilkington, Business Manager. Faculty and Staff: Teresa Lee, Martha Marking, Frank Mohler, Ed Pilkington, Linda Welden, Joel Williams.

Productions: Whisper of the River, Godspell, A Midsummer Night's Dream, Jack and the Wonder Beans.

The newly rebuilt theatre at Appalachian State University was dedicated on April 13, 1994 as the Valborg Theatre, a 335-seat flexible thrust/proscenium space with state of the art equipment and furnishing. The Valborg opened with **A Midsummer Night's Dream**, which involved over 150 students in all aspects of production. Under the direction of Susan S. Cole, it was costumed in the early 19th century and featured incidental music by Felix Mendelssohn. The Mendelssohn music enhanced four fairy dances especially choreographed for the production and which represented the collaboration of the two areas of the Department of Theatre and Dance.



Chris Graham in Whisper of the River, directed by Linda Welden, with scene design by Chet Longley, lighting design by Jim Fussell, and costume design by Derek King.



Rance Greene and Dave Furr in A Midsummer Night's Dream, directed by Susan S. Cole, with scene and lighting design by Frank Mohler and costume design by Martha Marking.



Mark Suggs, Jason Gilbert, and cast of A Midsummer Night's Dream, directed by Susan S. Cole, with scene and lighting design by Frank Mohler and costume design by Martha Marking.

ANDERSON UNIVERSITY

Anderson, IN
APO Cast: Lambda Theta



Craig Cook in *Plaza Suite*, directed by James O. Morehead, with scene design by Todd Callen and costume design by Staci Bush.



Robert N. Smith, faculty sponsor. Officers: Diana Rinaldi, President; Heather Tadlock, Vice President; Kirk Parsons, Secretary. Faculty and Staff: James O. Morehead.

Productions: **Major Barbara, Measure for Measure, Sleeping Beauty, My Fair Lady, Christ in the Concrete City, Plaza Suite, University, Mr. Silver's Children.**

Awards were won by the following students: Craig Cook, Steve Bianchi, Diana Rinaldi, and Robert Williams (Malcolm Greeman Senior Award); Andrew Aaron and Kirk Parsons (Malcolm Gressman Junior Award); James Black, Michelle Howe, and Janet Umbstead (Robert N. Smith Freshman Award); and Steve Bianchi (Year's Most Active Member).



Christa Shoot, Tim Hooten, and Katie Edwards in *My Fair Lady*, directed by Robert N. Smith, with scene design by Robert N. Smith and costume design by Staci Bush.

ALBERTSON COLLEGE

Caldwell, ID
APO Cast: Eta

Charles R. Hannum, faculty sponsor.

Productions: **A Thurber Carnival, Twelfth Night, Oh Dad, Poor Dad, Mamma's Hung You in the Closet and I'm Feeling So Sad, This Property Is Condemned.**



Louie Lopez and Jill Snyder in "The Unicorn in the Garden" scene of *A Thurber Carnival*, directed by Charles R. Hannum, with scene design by Charles R. Hannum, costumes by Joan Lonergan and lighting by Louie Lopez.



Matt Pember, James Rice, Andrew Ellis, and Craig Franson in *Twelfth Night*, directed by Charles R. Hannum, with scene design by Charles R. Hannum and costumes by Joan Lonergan.

STATE UNIVERSITY of NY at COBLESKILL

Cobleskill, NY
DPO Cast: #2

Michael E. Vandow, faculty sponsor. Officers: Matt Shost, President; Kevin Brown, Vice President; Julie Squirrel, Secretary-Treasurer. Faculty and Staff: Cherie Stevens.

Productions: **Damn Yankees**, **Joseph and the Amazing Technicolor Dreamcoat**, **Hedda Gabler**.

Awards were presented to Peter Dominick (Freshman Award for Outstanding Contribution to Theatre) and Andrea Branacto (Senior Award for Outstanding Contribution to Theatre).



Jim Patterson, Jason Wugalter, Kevin Brown, Matt McMorris, Matt Shost, Collin Ouderkirk, Tim Crabill, and Peter Dominick in *Damn Yankees*, directed by Michael E. Vandow.



Peter Dominick and Allison Delesia in *Hedda Gabler*, directed by Michael E. Vandow.



UNIVERSITY of WISCONSIN — RIVER FALLS

River Falls, WI
APO Cast: Iota Beta

Margaret-Millen-Swanson, faculty sponsor. Officers: Joshua Will, President; Eric Quam, Vice President; Kate Haberman, Treasurer. Faculty and Staff: Ken Stofferahn, Robin Murray, James Zimmerman.

The following student thespians won awards: Joshua Will (Outstanding Director), Eric Quam (Outstanding Actor), Melanie Waldoch (Outstanding Actress), Mel Springer (Outstanding Set Designer), Keith Kennedy (Outstanding Lighting Designer), Tracy Czech (Outstanding Costume Designer), Tracy Davis (Outstanding Stage Manager/Assistant Director), Spence Lowe (Outstanding Supporting Actor), Lori Schneider (Outstanding Supporting Actress).



Matt Pavik, Dennis Harlander, Josh Will, Melanie Waldoch, and Spence Lowe in *Playing With Fire*, directed by Margaret Millen-Swanson, with scene design by Ken Stofferahn and costume design by Robin Murray.



Melanie Waldoch, Eric Quam in *Antigone*, directed by Joshua Will, with scene design by Mel Springer, costume design by Tracy Czech, and lighting design by Keith Kennedy.

JACKSONVILLE UNIVERSITY

Jacksonville, FL
APO Cast: Phi Iota

George Ballis, faculty sponsor. Officers: Jill B. Herkel, President; Julie Richman, Vice President; Megan Elsila, Business Manager; Jessica Warren, Secretary; Jeff Wagoner, Sgt. at Arms; John Koch, Pledge Master. Faculty and Staff: Peter Yesair, Jerry Turbow, Debbie Jordan, Gus Weltsek.

Productions: **The Dining Room**, **Cinderella**, **Rashomon**, **It Came Upon a Moonlight Serenade**, **A Lie of the Mind**, **The Old Maid and the Thief**, **A Moon for the Misbegotten**, **Sister Mary Ignatius Explains It All For You**.

Awards were presented to the following students: Megan Elsila (Dean's Excellence Award in Theatre), Jill B. Herkel (Most Outstanding Contribution to Alpha Psi Omega), John Koch (Departmental Honors-Theatre), Julie Richman (Outstanding Lead Actress), Troy Spurlin (Outstanding Lead Actor), Melissa Stepp (Outstanding Supporting Actress), John Koch (Outstanding Supporting Actor), Dan Robillard (Outstanding Technical Theatre Student), Andrew Miller (Outstanding Lighting Design), Megan Elsila (Outstanding Scene Design), Megan Elsila (1994 Fine Arts Honor Society).

*Lillian Stuart and Sid Hammond in **A Moon for the Misbegotten**, directed by John Koch, with scene design by Jeff Wagoner and costume design by Staci Cobb.*



*The cast of **The Dining Room**, directed by George Ballis, with scene design by Peter Yesair and costume design by Shelley King.*

STATE UNIVERSITY of New York at FREDONIA

Fredonia, NY
APO Cast: Theta Omega

Mary Charbonnet, faculty sponsor. Officers: Colleen Hammond, President; Arlyn Wolters, Vice President; Laurie Sullivan, Secretary; Matt Fox, Treasurer. Faculty and Staff: Thomas Loughlin, Candice Brown, Gary Eckhart, Steve Rees, Carol Blanchard-Rocheleau.

Productions: **Cloud Nine**, **Lend Me a Tenor**, **Alice in Wonderland**, **A Streetcar Named Desire**, **Cinders**, **Oliver!**, **Vanities**.

Awards: Michelle Helbert (Jean Schoener Meritorious Service Award), R. J. Ropoza (Performing Arts Company Award), Tiffany Wolins and Michael Rivera (Alpha Psi Omega Award), Colleen Hammond (Theatre Arts Special Achievement Award), Laurie Sullivan (Theatre Arts Outstanding Senior Award), Jennine Trimboli (Howard E. Marsh Musical Theatre Award), Jennifer Scigliabaglio (John S. Mintun Outstanding Performance Award), Rebecca Pokorski (Gary C. Eckhart Design and Technical Achievement Award).



*Jennifer Scigliabaglio and Michael Leonardo in **Lend Me a Tenor**, directed by Robert Klassen, with scene design by Gary Eckhart and costume design by Daniel Kegler.*



*Chad Danford and Jeannine Trimboli in **A Streetcar Named Desire**, directed by Robert Klassen, with scene design by Gary Eckhart and costume design by Carol Blanchard-Rocheleau.*

ELIZABETHTOWN COLLEGE

Elizabethtown, PA
APO Cast: Sigma Phi

Michael Severeid, faculty sponsor. Officers: Dan McHenry, President; Brian Falck, Vice President; Mike Burke, Business Manager. Faculty and Staff: James Hunter.

Productions: **The Dining Room**, **The Hostage**, **Much Ado About Nothing**.

Awards: Dan McHenry and Tom Saurer (Roy Ream Theatre Scholarships), Mary Triano (Unsung Hero Award), Dusty Paddock (Most Valuable Senior), Sharon Harrigan (Most Valuable New Member), Dr. Craig Hergert (Dramatic Honor Award), Jim Hunter and Mike Severeid (Dramatic Appreciation Awards).



*Alysia Shields, Craig Hergert, Jennifer Bankard, Jessica Geis, Edward Lee, Timothy Ian Miller, Robb Flick, Jeff Brooks, J. J. Lemon, Mike Scharfenberger, Chris Andrade, Kara Vichko, Dan McHenry, John Yeoman, and Kathryn McCluskey in **The Hostage**, directed by Michael Severeid, with scene design by James Hunter and costume design by Phyllis Edmisson.*



*Mike Scharfenberger, Marc W. Ahrens, Dan McHenry, Edward Lee in **Much Ado About Nothing**, directed by Michael Severeid, with scene design by James Hunter and costume design by Phyllis Edmisson.*

ASBURY COLLEGE

Wilmore, KY
APO Cast: Phi Kappa

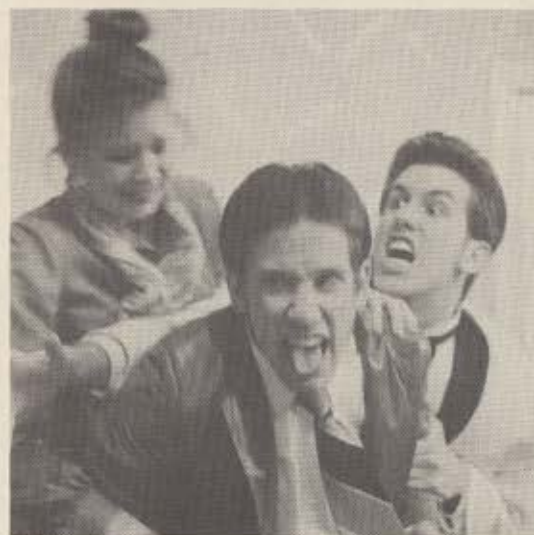
Sandra C. Harper, faculty sponsor.

Productions: **Crossing Delancey**, **Quiet on the Set**, **Into the Woods**, **A Man for All Seasons**, **All Out**, **The Nerd**.

Student award recipients included Melissa Frey (Harper Honor—Outstanding Senior Theatre Student), Kellis Snodgrass (Best Male Lead), Melissa Frey (Best Female Lead), Elizabeth Johnston (Best Student Director), John Gunther (Best Supporting Male), Kate Armstrong (Best Supporting Female), Jay P. Smith (Best Set Design), **Into the Woods** (Best Production).



*Kellis Snodgrass, John Gunther, Glenda Lively, and Allen Hale in **All Out**, directed by Sandra C. Harper, with costume design by Glenda Lively and Allen Hale.*



*Melissa Frey, Cameron Henderson, and Kellis Snodgrass in **The Nerd**, directed by Sandra C. Harper, with scene design by Jay P. Smith and costume design by Allen Hale and Elizabeth Johnston.*

HARDIN-SIMMONS UNIVERSITY

Abilene, TX
APO Cast: Zeta Theta

F. Larry Wheeler, faculty sponsor. Officers: Stephen Madrid, President and Worthy Grand Director; Lauri Phillips, Vice President and Assistant Director; Emily Maxwell, Secretary-Treasurer; Jennifer Molpus, Pledge Mother. Faculty and Staff: James Ivey.

Productions: **Exit the King**, **The Man Who Came to Dinner**, **Taming of the Shrew**, **The Effects of Gamma Rays on Man-in-the-Moon Marigolds**, **Postcards**, **Trout**, **Cathedral**, **The Actor's Nightmare**, **Western Heritage Festival Melodrama**.

Awards: Lauri B. Phillips (Artist of Dionysus), Jennifer Molpus (Ruth Anne Hall Award for the Most Improved Performer), Stephen Madrid (Best Actor), Christy Stanlake (Best Actress), Jeremy Moran (Best Featured Actor), Holly Phillips (Best Featured Actress), Rodney Guenther and Emily Maxwell (Awards for Technical Achievement).



Laura Seaton, Jennifer Simpson, and Vanessa Dobrick in *Postcards*, directed by Christy Stanlake, with production design by Christy Stanlake.



Kimberly Pride, Dr. J. G. Martin, Jeremy Moran, Dave Sanders, and Jennifer Molpus in *The Man Who Came to Dinner*, directed by James Ivey, with scene design by F. Larry Wheeler, costume design by Laura Berkley, and lighting design by Rodney Guenther.



Laurie Phillips, Stephen Madrid, and Christy Stanlake in *Exit the King*, directed by F. Larry Wheeler, with scene design by Laurie Phillips and lighting design by Emily Maxwell.



David Lowe and Jeremy Moran in *Trout*, directed by Rodney Guenther, with scene design by Rodney Guenther, costume design by Jennifer Molpus, and lighting design by Rodney Guenther.

LORAS COLLEGE

Dubuque, IA
APO Cast: Loras Players

Donald W. Stribling, faculty sponsor. Officers: Cecelia Heger, President; Jenny Jaros, Vice President; Charles Raucci, Secretary-Treasurer. Faculty and Staff: Laurreta Stribling.

Productions: **Oklahoma!**, **Scrooge**, **Marley & Co.**, **You Can't Take It With You**, **Love Letters**, **Magical Gifts and Dragons**.

The Stribling Theatre Arts Scholarship, presented annually to a student or students who have contributed significantly to the Loras Players, went to Michael Obermueller, who received a check for \$500 at the annual Alpha Psi Omega banquet and initiation where he was also elected President for the coming year.



*Jesse Pottebaum, Jeremy Salucka, and Tom Ksobiech in **Magical Gifts and Dragons**, directed by Cecelia Heger, with scene design by Jenny Jaros and costume design by Laurreta Stribling.*



*Cecilia Heger and Aaron Michael Beelner in **You Can't Take It With You**, directed by Donald W. and Laurreta Stribling, with scene design by Donald W. Stribling and costume design by Laurreta Stribling.*

ELIZABETH CITY STATE UNIVERSITY

Elizabeth City, NC
APO Cast: Phi Zeta

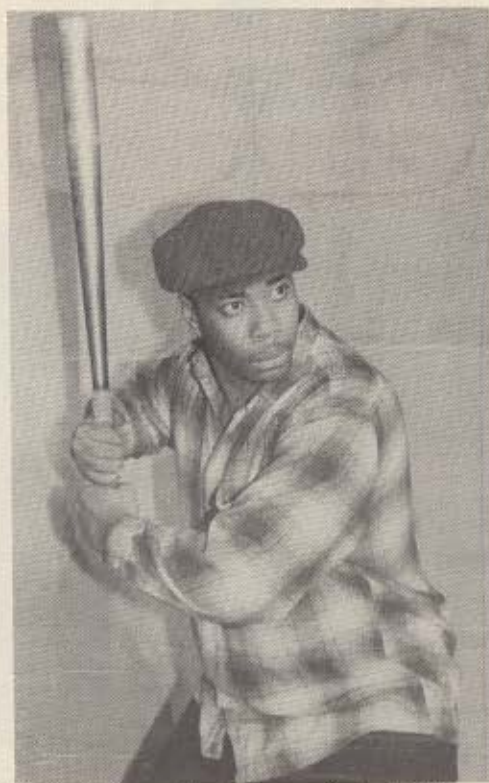
W. Shawn Smith, faculty sponsor. Officers: Tresha R. Griffin, President; Rosa Riddick, Vice President; Jerome Brothers, Secretary; Renita A. Boone, Treasurer. Faculty and Staff: Randy J. Berry, Mary Northrup.

Productions: **The Crucible**, **Fortinbras**, **Fences**, **The Odd Couple**, **One-Act Play Festival**.

Award winners for the year were: Randy J. Berry and Tresha R. Griffin (Distinguished Service Awards).



*LaVonne McClain, Craig Avondo, and Tresha R. Griffin in **The Crucible**, directed by W. Shawn Smith, with scene design by Randy J. Berry and costume design by Mary Northrup.*



*Chester Duntun as Troy in **Fences**, directed by W. Shawn Smith, with scene design by Randy J. Berry and costume design by Mary Northrup.*

MIAMI UNIVERSITY

Oxford, OH
APO Cast: Omega Rho

Geoff Fishburn, faculty sponsor. Officers: Jennifer Fausnight, President; Laura Patterson, Vice President; Liz Brohm and Rick Lipton, Co-Secretaries; Kacey Springhart, Treasurer. Faculty and Staff: Bonnie Eckard, Lin Conaway, Mike Griffith.

Productions: **Tango, Parlour Room, The Bartered Bride, Breaking the Code, Approaching Zanzibar, Oh, What a Lovely War!, Burn This.**

Award winners: Meggan Witt (1st Place Costume Design, American College Theatre Festival 1993) and Wendy Saver (Alternate for Irene Ryan Award, American College Theatre Festival 1993).



Watson Kawecki, Heather MacDermott, C. Patrick Tyndall and Toni Brotons-Goodney in **Tango**, directed by Howard Blanning, with scene design by Jan Zavorsky and costume design by Lin Conaway.



Wendy Saver, Kelly Fischer, Leigh Ann Fibbe, Lauren Pesca, Diana Uhlenbrock, Sara Jones, Kacey Springhart, Natalie Nolte, Dina Gardner, and Jennifer Gosz in **Sweet Charity**, directed by Larry Life, with scene design by Jaime Windsor and costume design by Lin Conaway.

STATE UNIVERSITY of New York at OSWEGO

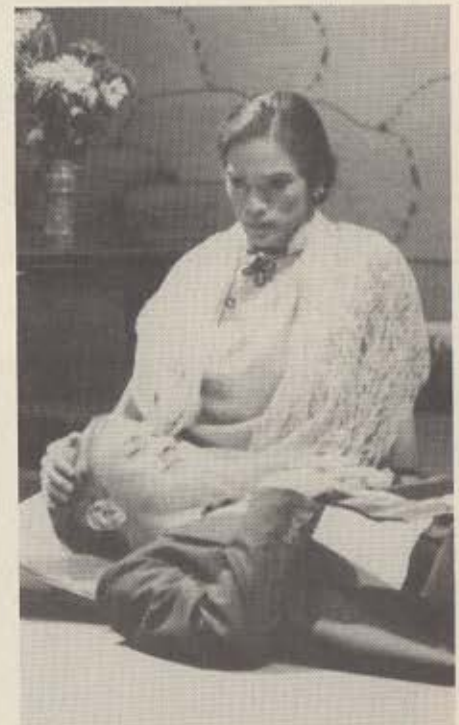
Oswego, NY
APO Cast: Mu Iota

Mark Cole, faculty sponsor.

Productions: **M. Butterfly, Crimes of the Heart.**



Beth Elliott, Lucy Gallucci, and Diana Priesler in **Crimes of the Heart**, directed by Georgia Martin, with scene and lighting design by Kevin Brown and costume design by Kitty Macey.



Patrick Aro and Michael Schvetté in **M. Butterfly**, directed by Ron Medici, with scene and lighting design by Jim Packard and costume design by Kitty Macey.

MILLIKIN UNIVERSITY

Decatur, IL
APO Cast: Omega Xi

Eileen M. Smith, faculty sponsor. Officers: Heather Burress, President; Carrie Burkett, Vice President; Joelle Charbonneau, Secretary-Treasurer; Lisa Hackman, Head of Publicity.

Productions: **Les Liaisons Dangereuses**, **Romantic Comedy**, **Sweet Charity**, **Fiddler on the Roof**.

Alpha Psi Omega members at Millikin University sponsored a "Haunted House" fundraiser at Halloween and ran drug prevention/education workshops at the local high school. Omega Xi cast members also sold refreshments and providing ushering services for department productions.



Jonathon Frick and Shelley McCrosky in Romantic Comedy, directed by John King, with scene design by Deb Zinkiewicz, costume design by Mary Spencer, and light design by Doug Molash.



Angel Barrette, Emily Berry, Jean Keller, and Jason Hill in Les Liaisons Dangereuses, directed by Barry Pearson, with scene design by William Murray, costume design by Mary Spencer, and lighting design by Doug Molash.



Jessica Wright, Janna Cardia, Coe Krause, Tamara Walker, Kelly Grady, Julia Cardia, Joy Nesser, Jennifer Sutton, Suzanne Spinosa, and Amy Mitchell in Sweet Charity, directed by Lynne Snyder, with scene design by Doug Molash, costume design by Eileen M. Smith, and lighting design by Becki Dosen.



The cast in Fiddler on the Roof, directed by Laura Ledford-Pearson, with scene design by Doug Molash, costume design by Mary Spencer, and lighting design by William Murray.

TAYLOR UNIVERSITY

Upland, IN

APO Cast: Beta Sigma

Oliver F. Hubbard, faculty sponsor. Officers: Oliver F. Hubbard, Cast Director; Jessica L. Rousselow, Cast Stage Manager. Faculty and Staff: Jessica L. Rousselow.

Productions: Tales From Rogues' Hollow, Tender Lies, Lest We Forget, Steel Magnolias.



Luke Breneman and Marisa Murphree in Tales From Rogues' Hollow, directed by Sandra Walker, with scene design by Jason Welch and costume design by Sandra Walker.



Amy Phillips, Melinda Leonard, Marisa Murphree, Lisa Angerer, Peter Marshall, Regina Wiruth, Jason Francis, Stephan Koch, Chris Thornton, Christina Leah, Eric Tweitmeyer, Sandra Walker, and Karen Stafford in Lest We Forget, directed by Janice Pletcher, with scene design by Jason Welch and costume design by Janice Pletcher.



Jill Peterson, Lisa Angerer, Martha Smith, and Rachel Diller in Tender Lies, directed and designed by Oliver F. Hubbard.



Jena Habegger and Sally Evans in Steel Magnolias, directed by Jessica L. Rousselow, with scene and costume design by Oliver F. Hubbard.

GRAND VIEW COLLEGE

Des Moines, IA
APO Cast: Omega Beta

Charles E. Chapman, faculty sponsor. Officers: Mark Littlejohn, President; Heather Van Horn, Vice President; Jennifer Wickersham, Business Manager; Tiffany Shepherd, Viking Coucilor. Faculty and Staff: Doug Larche, Michael Percival.



Jennifer Wickersham and Brad Feingold in *South Pacific*, directed by Doug Larche, with scene design by Charles Chapman and costume design by Doug Larche.



Shea Kennedy, Brad Feingold, Mark Littlejohn, Alexander Darke, Jennifer Wood, Chris Roberts, DeAnna Dove, Brandy Teague, Ryan Bacidore, Regina Blunt, Curtis Wood, and Jason Larche in *One Flew Over the Cuckoo's Nest*, directed by Doug Larche, with scene design by Charles Chapman and costume design by Charles Chapman and Doug Larche.

Productions: *One Flew Over the Cuckoo's Nest*, *Macbeth*, *The Good Doctor*, *South Pacific*, *Mexicanville*, *The Fifth Horseman*, *Legacies*, *What About Kate*, *Les Sculptures de la Prairie*, *Blue Velvet*.

Chapter Recognition Awards were presented to: Heather Van Horn, Mark Littlejohn, Mark Hennings, Ben Eichner.

NORTHERN OKLAHOMA COLLEGE

Tonkawa, OK
DPO Cast: #115

Susan Vineyard, faculty sponsor.

Productions: *Green Grow the Lilacs*, *The Diaries of Adam and Eve*, *I Take This Man*, *The Boy With the Blue Nose*, *How to Eat Like a Child*, *Cracks in the Autumn Night*.

Awards: Seth Phillips (Best Actor), Jennifer O'Neill (Best Actress), John Cusick (Best Supporting Actor), Diana Cales (Best Supporting Actress), Kevin Mullis (Best Cameo), Seth Phillips (Delta Psi Omega Theatre Award).



Mark Kokojan, April Walker, Seth Phillips, Tommy Meritt, Kristal Lucas, and Malia Stilwagen in *How to Eat Like a Child*, directed by Susan Vineyard.



Seth Phillips, Diana Cales, Mark Kokojan, and Eric Barley in *I Take This Man*, directed by Susan Vineyard.

MARSHALL UNIVERSITY

Huntington, WV

APO Cast: Beta

Maureen B. Milicia, faculty sponsor. Officers: Shannon Brown, President; Dan Connery, Vice President; T. Kevin Lageman, Secretary-Treasurer. Faculty and Staff: N. Bennett East, Eugene J. Anthony, Mike Murphy, James Morris-Smith, Deborah Carder, Kevin Bannon, Susan Dolen.

Productions: *Noises Off*, *A Funny Thing Happened on the Way to the Forum*, *The 1940's Radio Hour*, *The Rise and Rise of Daniel Rocket*, *A View From the Bridge*, *To Gillian on Her 37th Birthday*, *The Hothouse*, *Light Up the Sky*.



Dan Connery, Brad Brizendine, and Brian Kidd in *A Funny Thing Happened on the Way to the Forum*, directed by Eugene Anthony, with scene design by Mike Murphy.



Jennifer Fuller, Jason Frye, Shawn Ullerup, Trevor Long, Ben Goldman, and Julie Moore in *A View From the Bridge*, directed by Eugene Anthony, with scene design by James Morris-Smith.



Jason Bell in *The Hothouse*, directed by Danford Egnor, with scene design by Mike Murphy.



Julie Moore and Andre Runion in *To Gillian on Her 37th Birthday*, directed by Denis Brunelle, with scene design by James Morris-Smith.

Marshall University Theatre has been performing non-stop since 1928. Since their recent move into a new thirteen million dollar Fine and Performing Arts Center, University Theatre and the Department of Theatre/Dance have been dedicated to the revitalization of their new performance and academic demands. The new facilities include three theatres, providing a broad range of versatility in staging workshops and mainstage productions.

WHITTIER COLLEGE

Whittier, CA
APO Cast: Pi Mu



Wendy Newell and Guy Marziello in *Virtual Mystery*, directed by Jack de Vries, with scene design by Brian Alan Reed.

Awards: David Wayne (Outstanding Senior in Theatre Arts) and Adam Webster (Outstanding Senior in Theatre Arts).

Jack de Vries, faculty sponsor. Officers: Brian Colburn, President; David Wayne, Vice President; Jennifer Isley, Secretary-Treasurer. Faculty and Staff: Crystal Brian, Brian Reed.

Productions: **Romantic Comedy, Cousins, Virtual Mystery, The Art of Dining, Orphans.**



Neil Switzer, Brian Colburn, and Colleen Windham in *Cousins*, directed by Crystal Brian, with scene design by Brian Alan Reed and costume design by Alexa Johnstone.

MOUNT UNION COLLEGE

Alliance, OH
APO Cast: Alpha Tau

Douglas Hendel, faculty sponsor. Officers: Teresa M. Silvestri, President; James Krapence, Vice President; Greg Herlevi, Secretary. Faculty and Staff: Rudy Roggenkamp.



Teresa M. Silvestri and James Howald in *The Children's Hour*, directed by Rudy Roggenkamp, with scene design by Rudy Roggenkamp and costume design by Diane Steimel.



Josh Zeedrich, Andrew Lower, and Jeff Bentley in *Twelfth Night*, directed by Douglas Hendel, with scene design by Rudy Roggenkamp and costume design by Leslie Pope.

Productions: **Lloyd's Prayer, The Children's Hour, Twelfth Night, Noises Off.**

Awards were presented to: Justin E. Sly (The Dramatics Award), Teresa M. Silvestri (The Faculty Drama Award), Virginia L. Bartholomew (The George L. and Margaret Wagner King Prize in the Performing Arts), William W. Frase and Justin E. Sly (Mount Union Players Hall of Fame Award), Teresa M. Silvestri and Christine Sombrio (Acting in *The Children's Hour*), Bill Crawford (Acting in *Lloyd's Prayer*), Claire Waite, Jeffrey Bentley, and Dave Edwards (Acting in *Twelfth Night*), and Jason Marr (Acting in *Noises Off*).

UNIVERSITY of RICHMOND

Richmond, VA
APO Cast: Eta

John D. Welsh, faculty sponsor. Officers: Daniel Culbertson, President; Scott Gottel, Vice President; Amanda Clark, Recording Secretary; Robert Murphy, Business Manager; Robert Zehner, Historian. Faculty and Staff: Walter Schoen, Nancy Allen, Warwick R. West III.

Productions: **Tartuffe, Misalliance, Our Country's Good, Tango.**

Awards: Adrian Lovett (Best Actor), Elizabeth Butler (Best Actress), Christian Pedersen (Best Supporting Actor), Julie Amos (Best Supporting Actress), Daniel Culbertson (Best Male Cameo), Jennifer Nittoso (Best Female Cameo), Robert Zehner (Season Sound), Katie Massa and Amanda Clark (Alton B. Williams Scholarship Winners).



Vince Vander Heijden, Patrick J. Calello, Jeffery Carl, Daniel Culbertson, and Robert Murphy in *Our Country's Good*, directed by Walter Schoen, with scene design by Warwick R. West III and costume design by Nancy Allen.



Brandon Waugh, Elizabeth Butler, Adrian Lovett, Kevin Creamer, Eric Dobbs, Katie Massa, and Jonathan Sale in *Misalliance*, directed by John D. Welsh, with scene design by Warwick R. West III and costume design by Nancy Allen.

MISSISSIPPI GULF COAST COMMUNITY COLLEGE

Gulfport, MS
DPO Cast: #359

Wayne Catlett, faculty sponsor. Officers: Anthony Shank, President; Peter McAllister, Vice President. Faculty and Staff: Cheryl Larsen, Janie Walters.

Productions: **The Runner Stumbles, The Servant of Two Masters, Vanities.**



Matthew Busby and Vivian Kleinman in *The Servant of Two Masters*, directed by Charles Bosworth, with scene design by Wayne Catlett and costume design by Charles Bosworth.



Chip Turman, Tom Jones, Anthony Shank, and Vivian Kleiman in *The Runner Stumbles*, directed and designed by Wayne Catlett.



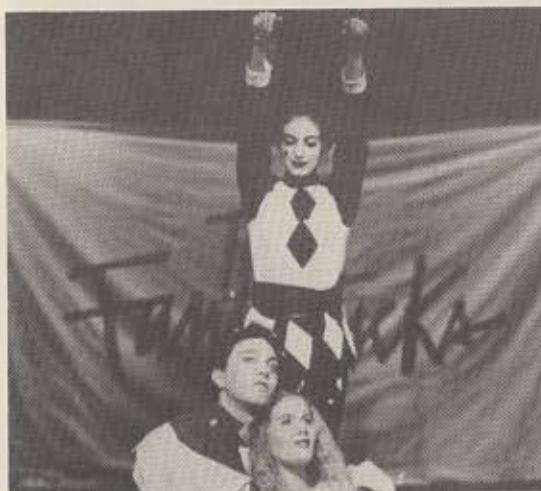
Holly Ann Strickland, Carl Shaw, Kenton Ackerson, Adam Brewer, Haley Hinthorn, Blayne Puckett, Jim O'Shield, Todd Vaughn, Doug Rothget, Chris George, and Matt Frizane in the Independence Community College DPO cast production of *Joseph and the Amazing Technicolor Dreamcoat*, directed by Ray Rothgeb, with lighting design and technical direction by David D. Sherlock, and costume design by Su J. Mai. David D. Sherlock, DPO cast faculty sponsor



Cliff Bowen, Jr. in the Mississippi College Pi Chi Cast production of *Man of La Mancha*, directed by Anne Sullivan, with scene design by Jimmy Robertson and Sonny White and costume design by Linda Magee. Anne Sullivan, APO cast faculty sponsor.



Kristen K. Adsit, Eric Justian, Andrew Luther, and company in the Muskegon Community College DPO Cast #28 production of *Hair*, with musical direction by W. Scott Cutting, choreography by Judith Brooky, scene design by Richard J. Oman, and costume design by Jeanette Wahr. Richard J. Oman, DPO cast faculty sponsor.



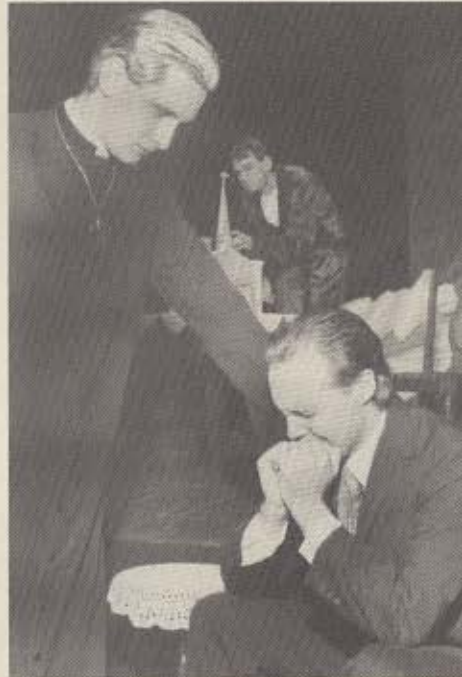
Jeff Page, Ellen Harger, and Rebecca Blazer in the Drury College Omega Kappa Cast production of *The Fantasticks*, directed and designed by Robin Schraft. Ruth Monroe, APO cast faculty sponsor.



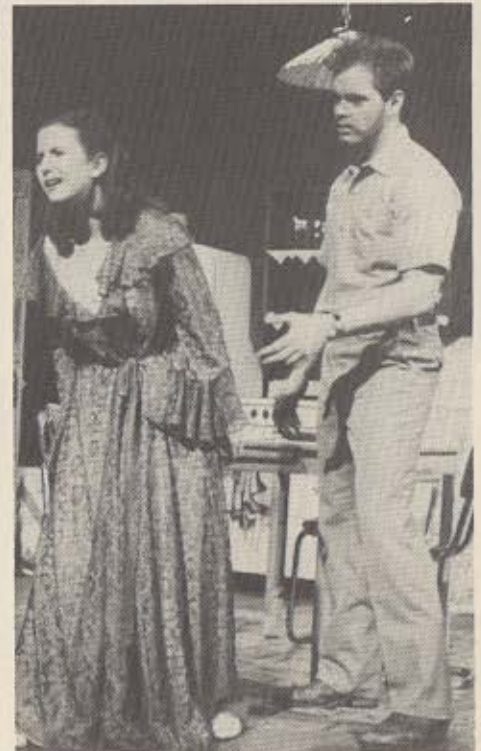
ALPHA PSI OMEGA and DELTA PSI OMEGA Present
THE GREAT DRAMAS!



Quincy Beard and Rebecca Daw in the Meredith College Eta Nu cast production of *The House of Bernarda Alba*, directed by Catherine Rodgers, with scene and costume design by Billy Murray. Catherine Rodgers, APO cast faculty sponsor.



Jake Allen, Jim Tennison, and Lance Burch in the East Texas Baptist University Omega Pi cast production of *The Elephant Man*, directed by Jack Bilbo, Jr., with scene design by Denise Welch and David Burke. Jack Bilbo, Jr., APO cast faculty sponsor.



Tabitha Richey and Randy Haworth in the Morningside College Alpha Gamma cast production of *A Streetcar Named Desire*, directed by Bruce E. Bunger, with scene design by Bruce E. Bunger and costume design by Bette A. Bunger. Marty Knepper, APO cast faculty sponsor.



Jared Govan, Ashley Wright, and Frank Jernigan in the Davidson College Iota Kappa cast production of *Buried Child*, directed and designed by Joseph T. Gardner, Jr., with lighting design by Ronnie Higdon and costume design by Katie Schlee. Rupert T. Barber, Jr., APO cast faculty sponsor.





ALPHA PSI OMEGA and DELTA PSI OMEGA Present

THE GREAT COMEDIES!



Kirk Bilski and Melissa Mitschke in the Blinn College DPO Cast #295 production of *The Apple Tree*, directed by Bradley A. Niles. Bradley A. Niles, DPO cast faculty sponsor.



Christopher M McKim, Jessica Luebbe, Cyndee L. Reynolds, and Adam B. Emswiler in the Union College Seia Chi cast production of *California Suite*, directed and designed by Kevin S. Crider. Rebecca Ansary Pettys, APO cast faculty sponsor.



Adair Weiss, Logene Solberg, and Wendy Hails in the Okaloosa-Walter Community College DPO Cast #357 production of *Steel Magnolias*, directed and designed by Walter B. Shipley. Walter B. Shipley, DPO cast faculty sponsor.



Tami Thompson, Gabriel Cummings, and Greg Worley in the Lander University Xi Iota cast production of *A Midsummer Night's Dream*, directed by Monique Sacay, with scene and costume design by Kenny Sanders. Monique Sacay, APO cast faculty sponsor.

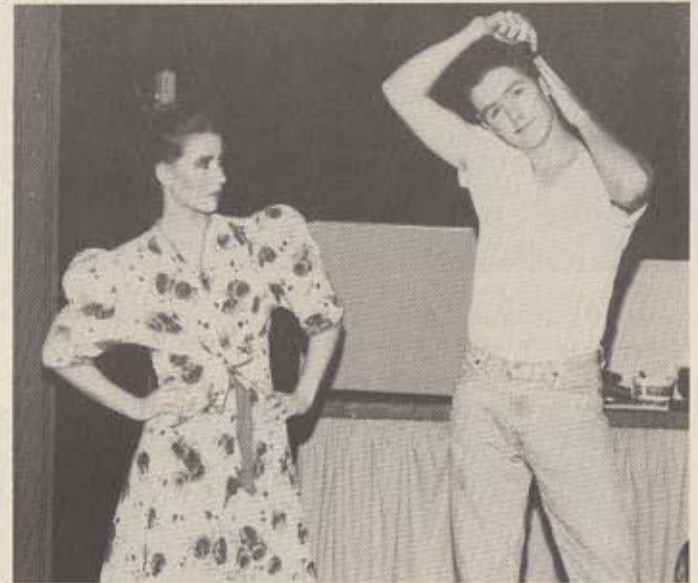




GREAT THEATRICAL MOMENTS!



Left: Maureen Connolly, Peter Vrankovic, and Barbara O'Connor in the St. John's University Upsilon Chi cast production of *Cabaret*, directed by Ed Guinan, with scene design by Donald L. Brooks, costume design by Bobbie McPherson, lighting design by Chris Davis, and musical direction by Jonathan Rosenblum. Ed Guinan, APO cast faculty sponsor.

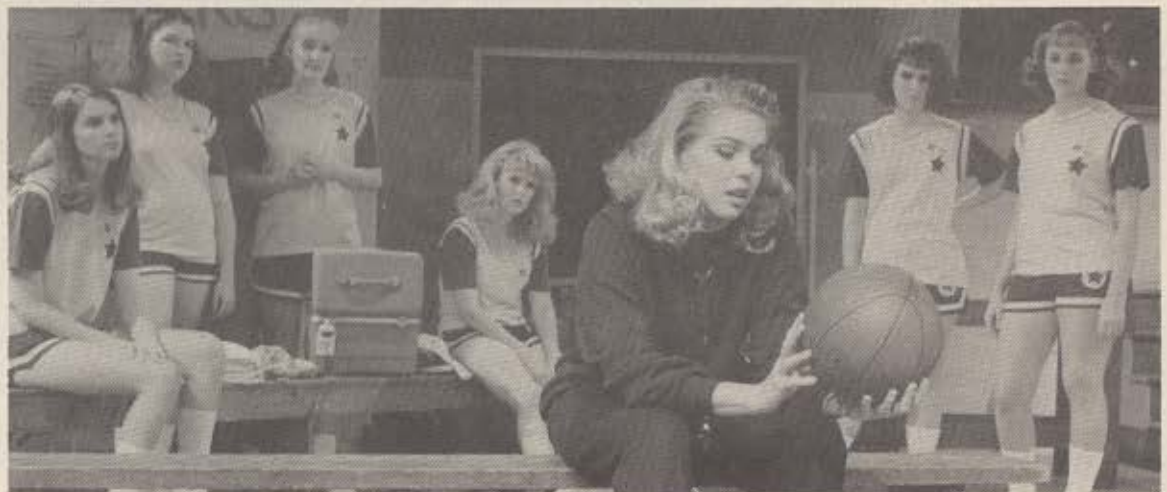


Right: Jeannie Barton and Bradley Price in the Mineral Area College DPO cast production of *42 Seconds From Broadway*, directed by G. R. Reney, with scene design by Steve Hovis and costume design by Gena Yount. G. R. Reney, DPO cast faculty sponsor.



Left: Pamela Sharp, Rachael Hill, Annette Johnson, Samantha Harmon, Beth Emerson, and Sherilyn Snyder in the Genessee Community College DPO cast production of *Shooting Stars*, directed by Marcia Morrison, with scene design by Tom Clark and costume design by Caroline Poppindeck.

Right: Mindy Dorf, Carrie Magness, Lynette Morse, Chris Englert, Gretchen Hock, Misty Bell, and Lynn Ellwood in the Bethany College Zeta Zeta Cast production of *Shooting Stars*, directed and designed by Norman E. Schroder, with costume design by Monia Haugsness. Norman E. Schroder, APO cast faculty sponsor.





ALPHA PSI OMEGA and DELTA PSI OMEGA Present

MORE GREAT THEATRICAL MOMENTS!



Juliet Gowing, Kim Morelock, and Nicole Holleran in the Hartwick College Nu Iota cast production of *A Chance*, directed by Denise Bell, with scene design by Seth Potter and costume design by Denise Bell. Duncan Smith, APO cast faculty sponsor.



Christina Hoellrich and Lucas Gutierrez in The Defiance College Beta Chi cast production of *A Pair of Lunatics*, directed and designed by Richard W. Thiede. Richard W. Thiede, APO cast faculty sponsor.



Heather Fory, Ginjer Graham, Julie Park, Dawn Epperson, and Shane Owen in the Howard Payne University Alpha Alpha Epsilon cast production of *Trouble in Storyland*, directed by Tani Martin, with scene design by Jeffrey York and Steve Lumpkins and costume design by Tani Martin and Julie Park.



Rebecca Jones, Gina Wake, Nick Kastler, Carrie Boling, and Brandon Jackson in the Arkansas College Mask and Dagger cast production of *Marvin's Room*, directed by Michael L. Counts, with scene design by Collin Brown and costume design by Christy Wallace-Hudson. Michael L. Counts, APO cast faculty sponsor.





A TRIBUTE TO THE "MASTER ARTIST OF THE THEATRE"

by James Fisher



Edward Gordon Craig (1872-1966), whose design for William Butler Yeats' **The Hour Glass** is featured on the cover of this year's PLAYBILL, was one of the most extraordinary theatrical artists of the twentieth century. As son of the great Victorian actress Ellen Terry and architect and scene designer Edward William Godwin, Craig began working as a walk-on in productions at London's prestigious Lyceum Theatre under the management of Henry Irving, the first theatrical knight. Irving and Terry dominated the English stage in the last quarter of the nineteenth century, particularly in their memorable Shakespearean collaborations. Craig made his adult debut at the Lyceum in **The Dead Heart** in 1889, co-starring with his mother. He continued to act at the Lyceum with Terry and Irving, and in the British provinces until 1897, when he decided to strike out on his own. He learned woodcutting and began publishing his own journal, **The Page**, in 1898. This was followed by **The Mask**, from 1908 to 1929, and **The Marionette** for a few brief years following World War I.

More importantly, in 1900, Craig conceived and staged a production of the Henry Purcell opera, **Dido and Aeneas**, for London's Purcell Operatic Society. In that production, and a few that would follow, Craig was able to promote his ideas for a new art of the theatre. In 1905, he published **The Art of the Theatre**, a visionary manifesto containing his theories of theatrical performance. This little book subsequently inspired a storm of controversy. The stage director of the future, Craig proclaimed, must become a master artist thoroughly skilled in all areas of production. He called for a movement away from realism and naturalism in all aspects of theatre and believed that the stage had become too dependent on literature, thus diminishing the importance of the actor and the other creative artists. Craig's most provocative essay in **The Art of the Theatre**, "The Actor and the über-marionette," called for the replacement of the living actor by a life-sized puppet whose "acting" could be completely controlled by the master artist. In **Dido and Aeneas**, Craig began to experiment with these notions. His subsequent London productions included Purcell's **The Masque of Love** (1901), Handel's **Acis and Galatea** (1902), Laurence Housman's nativity play **Bethlehem** (1902), a melodramatic potboiler **For Sword and Song** (1903), Ibsen's **The Vikings** (1903), and Shakespeare's **Much Ado About Nothing** (1903). These captured the attention of numerous noted artists and writers, including William Butler Yeats, Max Beerbohm, George Bernard Shaw, and others, but failed to catch on with a theatre-going public too accustomed to pictorial realism and star acting.

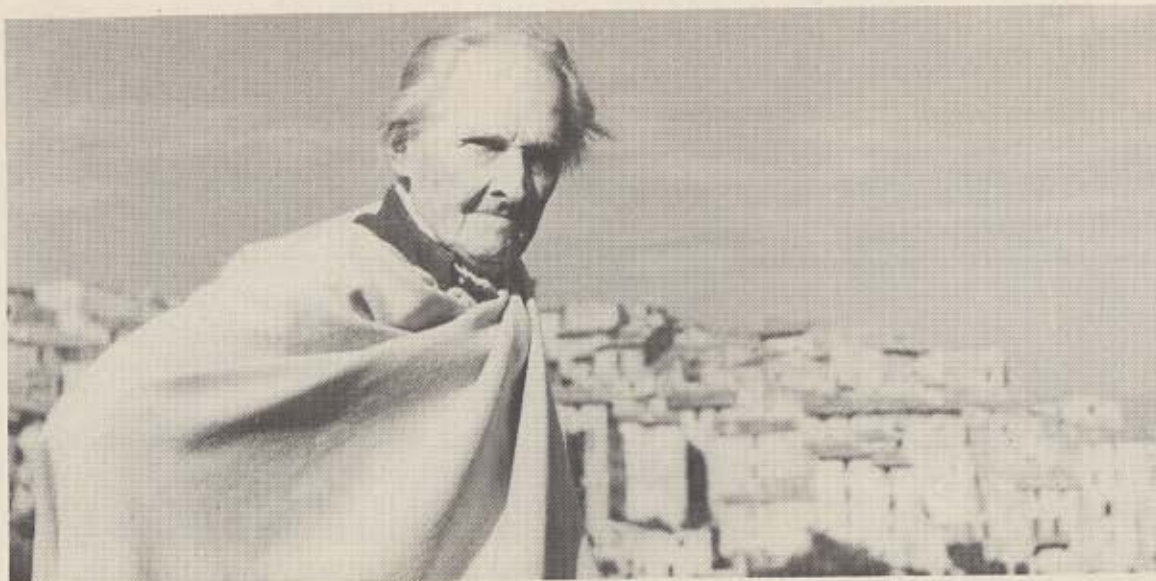
Angry and dispirited by the lack of attention paid to his ideas in his homeland, Craig became an exile, living first in Germany and later in Italy and France. While in Germany in 1904, he contributed some designs to an Otto Brahm production of Otway's **Venice Preserved**, but more importantly fell under the spell of the noted American dancer Isadora Duncan, with whom he fathered a child. Although they would subsequently go their separate ways, Craig was significantly inspired by Duncan's free-spirited dancing in his attempts to capture movement in his theatrical designs.

Craig longed for a theatre (and a theatre school) of his own, but his ideas, along with his flamboyant and temperamental personality, generally prevented him from realizing his ideas in productions. After the publication of **The Art of the Theatre**, his only actual productions included settings for a 1906 production of Ibsen's **Rosmersholm** for the legendary Italian actress Eleonora Duse, a 1911 Moscow Art Theatre production of **Hamlet** in collaboration with Constantin Stanislavsky, a 1926 production of Ibsen's **The Pretenders** in Denmark, and a 1928 New York production of **Macbeth** produced by George C. Tyler.

Craig's importance resulted more from his writings, published in his journals (particularly **The Mask**) and his numerous books and articles which he continued to work on into his nineties. He died in Vence, France, in 1966 at the age of ninety-four, recognized as one of the signal theatrical theorists and innovators of this century.

In selecting Craig's art for the cover of PLAYBILL, we pay homage to his singular search for theatrical perfection and for his awareness of the centrality of the actor and designer in the creation of a stage art.





Craig in his eighties in France.



A Craig sketch for a scene from *Hamlet*, which he worked on with Constantin Stanislavsky at the Moscow Art Theatre between 1908 and 1911, when it was first presented.



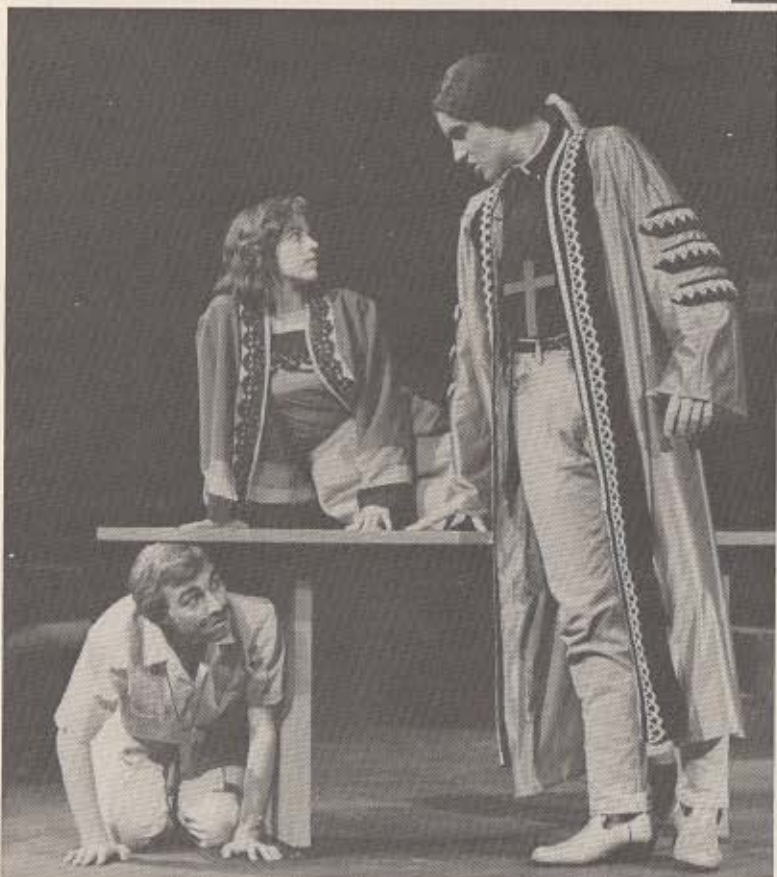
Craig's design for "Pierrot" in his 1901 production, *The Masque of Love*, which he described in his memoirs, *Index to the Story of My Days*, as the best thing he ever did on a stage.

(Left to Right) Ellen Terry, Edith Craig, and Edward Gordon Craig. Edith Craig, Terry's daughter and Edward Gordon Craig's sister, became a noted director of the feminist theatre troupe, *The Pioneer Players*, in London.



Alpha Psi Omega and Delta Psi Omega
PLAYBILL

Scott Barrow and Katiz Massa in the University of Richmond Eta cast production of Tango, directed by Bruce Speas, with scene design by Warwick R. West III and costume design by Nancy Allen.



Michael Nimchek, Allison Burling, and William J. Peters IV in the University of Richmond Eta cast production of Tartuffe, directed by Walter Schoen, with scene design by Warwick R. West III and costume design by Nancy Allen.